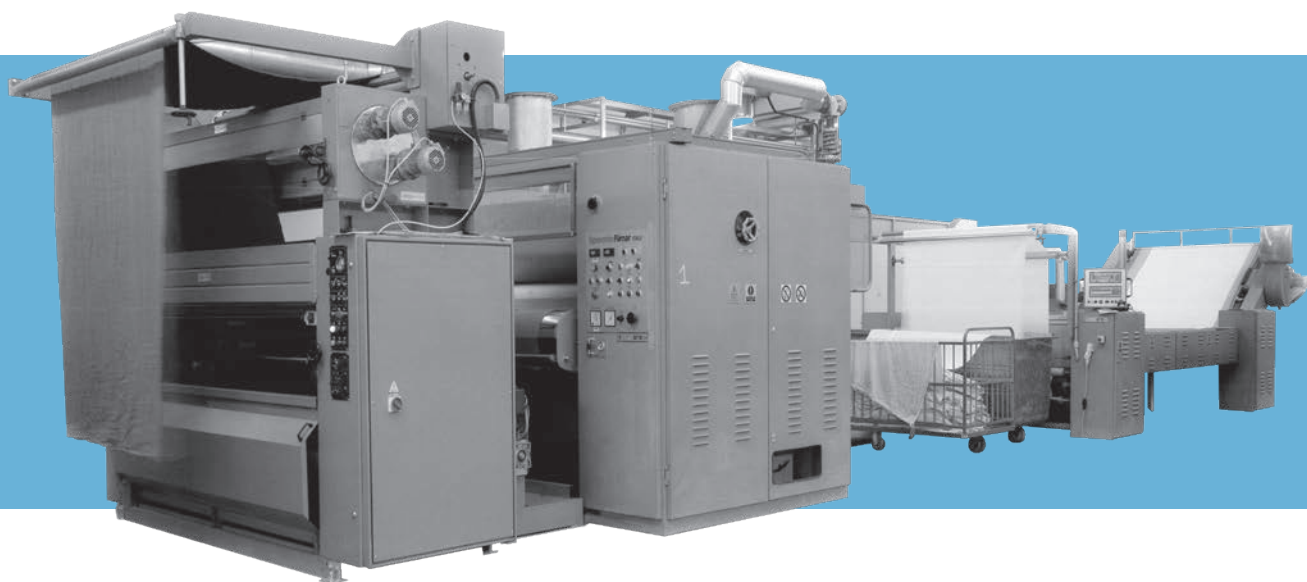


SANTEX
RIMAR
GROUP

SperottoRimar

*Tradition is our strength
Innovation is our mission*



MULTIDECAT 2

CONTINUOUS DECATIZING MACHINE

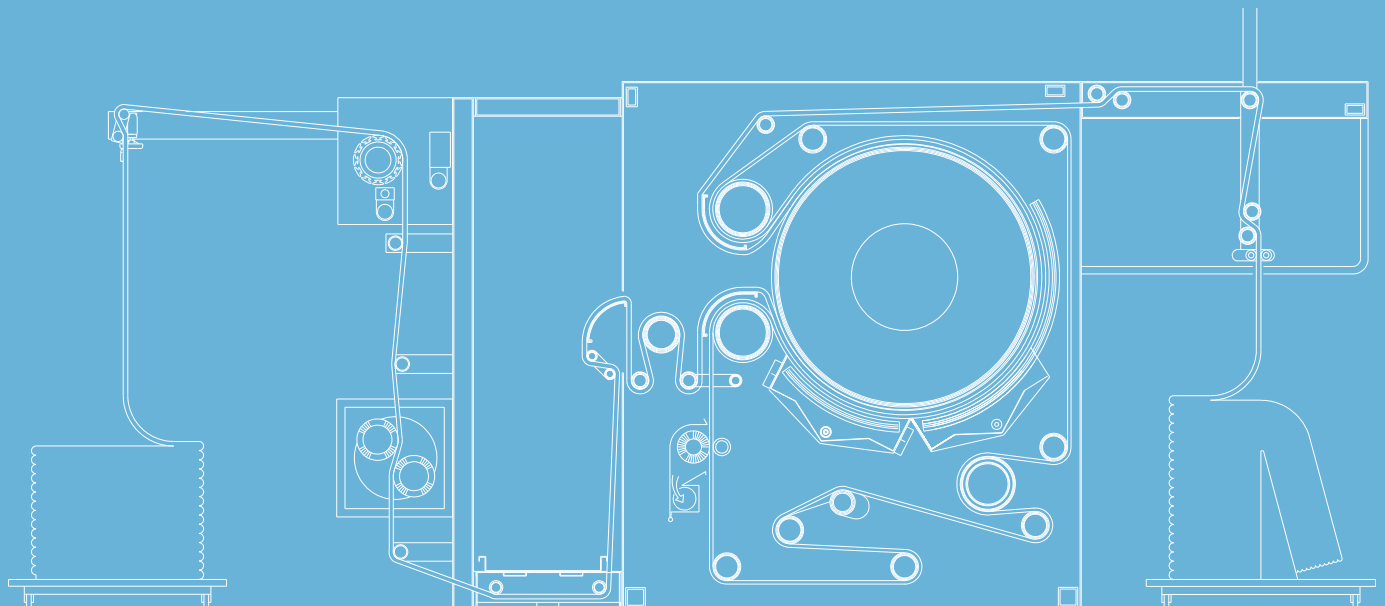
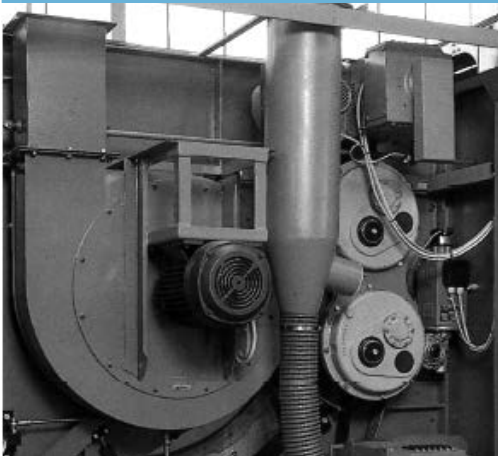
MULTIDECAT2 Continuous decatizing machine

MULTIDECAT 2 offers optimum performance in quality and production, whilst its running is particularly economic thanks to a rationalization of the concepts of construction and maintenance.

MULTIDECAT 2 is equally applicable in the most diverse finishing fields: from the wool sector to the silk one and cotton, for artificial and synthetic fibres as well, particularly when these are blended with natural fibres.

Applications

- Final decatizing of both woollen and worsted cloth of pure wool and in blends with polyester, viscose, silk, cotton; cotton, linen and their blends, viscose and polyester/viscose blends and pure silk.
- Preparatory treatment to the Kier Decatizing of woollens and drapery articles.
- Final fabrics decatizing previously treated by Kier Decatizing, to remove the excess of lustre to soft and to bulk the fabric hand.



TECHNICAL DATA

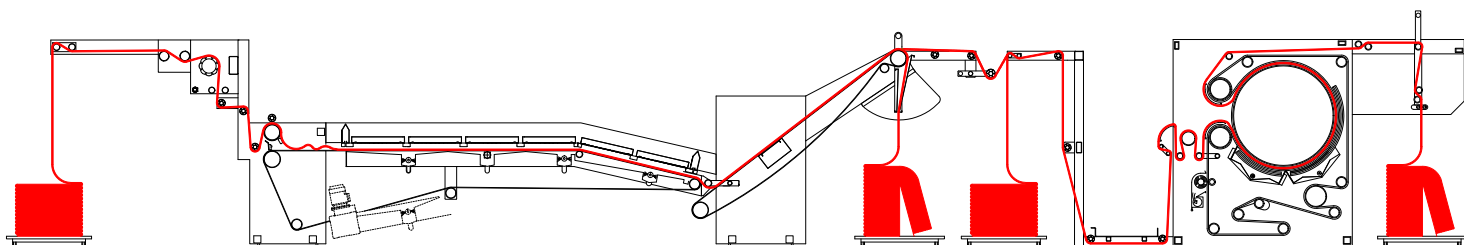
In usual operating conditions, the fabric is fed to the machine from plaited form, and the delivery at the machine is also plaited. However, on request, solutions with large roll at machine inlet or outlet or both can be supplied.

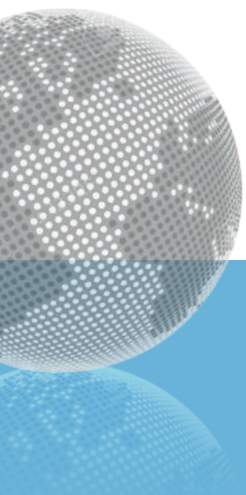
MULTIDECAT 2 can operate in connection with our steaming and shrinking machine mod. UNIVERSA usually positioned before.

The result is a very flexible finishing line, where a fabric first relaxation is then followed by a final decatizing. The machine working speed can be as high as 25 m/min and even higher in relation of fabric type and decatizing effect required.

MULTIDECAT 2 can be supplied with options:
single or double steaming section

Roller width	190 - 240 cm
Working width	170 - 220 cm
Mechanical speed	3 - 30 m/min.
Decatizing cylinder diameter	120 cm
Connected load	45 kW
Average steam consumption at 4-5 bar	400 - 500 kg/h
Compressed air consumption at 7-8 bar	nl/h 100
Average machine noise	db (a) <80





CAVITEC® ISOTEX® *santex*  SMIT SOLWA SperottoRimar

MULTIDECAT 2

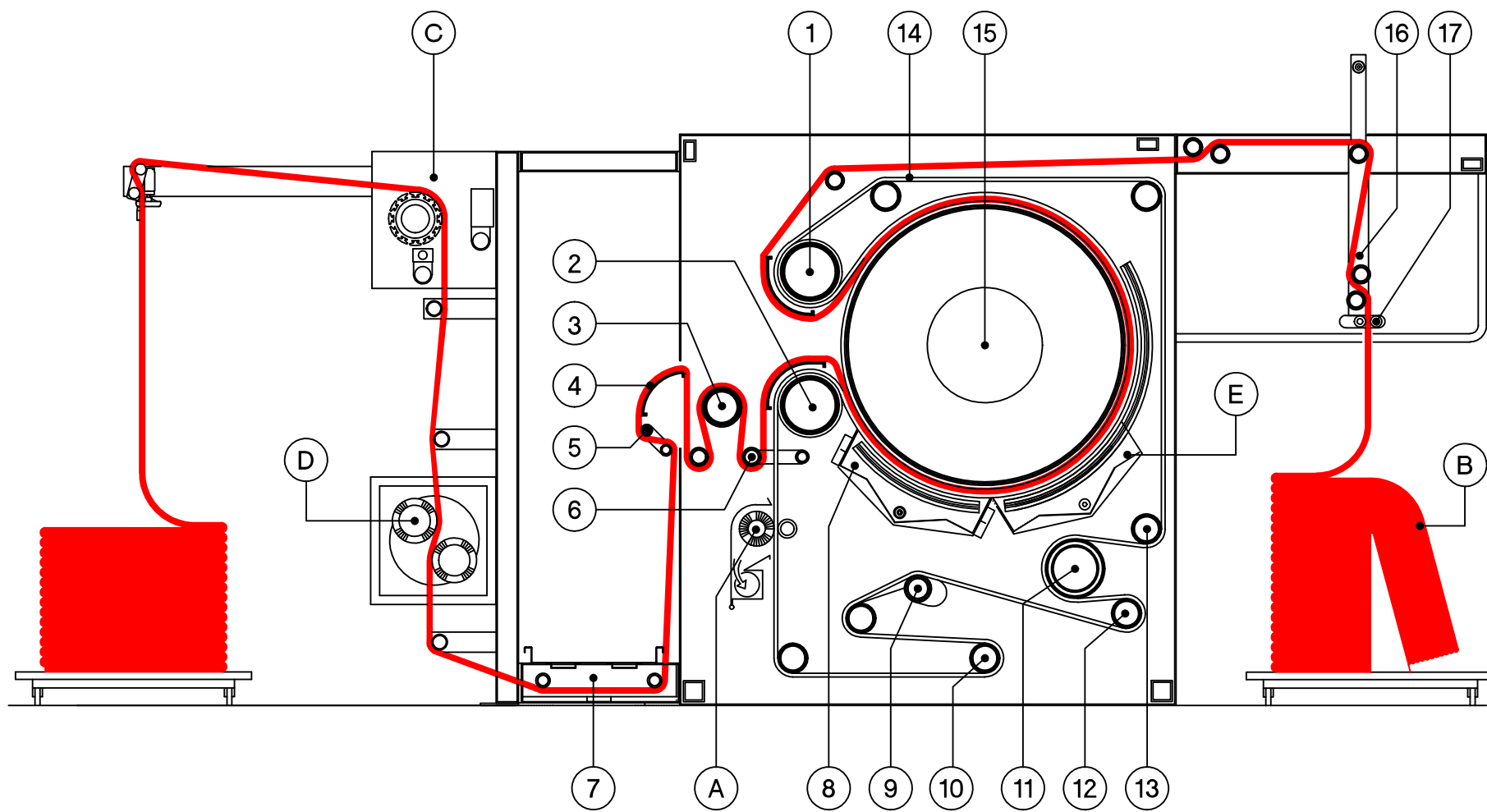
SANTEX RIMAR GROUP Worldwide

- Italy
- Switzerland
- China
- India

SANTEX
RIMAR
GROUP

SANTEX RIMAR Srl

Località Colombara 50 – 36070 Trissino (VI) – ITALY
Tel.: +39.0445.1761469 – Fax: +39.0445.1761478
sperottorimar@santexrimar.com – www.santexrimar.com



"MD/2" LEGENDA SEZIONE FUNZIONALE

"MD/2" FUNCTIONAL SECTION

- 1 - Cilindro trascinatore
- 2 - Cilindro di contrapposizione
- 3 - Cilindro alimentatore tessuto
- 4 - Scivolo controllo trame
- 5 - Freno tessuto
- 6 - Ballerino di sincronizzazione
- 7 - Panca d'introduzione
- 8 - Camera di vaporizzazione e scambiatori termici
- 9 - Cilindro allargatore curvo
- 10 - Cilindro tenditore sottopezza
- 11 - Cilindro asciugatore sottopezza
- 12 - Cilindro controllo di trama sottopezza
- 13 - Cilindro centratore automatico sottopezza
- 14 - Sottopezza ad anello senza fine
- 15 - Tamburo di decatissaggio ϕ 1200 mm.
- 16 - Faldatrice a braccia oscillanti
- 17 - Barre antielettrostatiche

- 1 - Blanket drawing roller
- 2 - Braked roller
- 3 - Fabric feeding roller
- 4 - Chute for weft control
- 5 - Gate-tension for fabric feed
- 6 - Compensator dandy roller
- 7 - Fabric feeding bench
- 8 - Steaming chamber and heat exchangers
- 9 - Bow spreading roller
- 10 - Blanket tension roller
- 11 - Blanket drying roller
- 12 - Blanket weft control roller
- 13 - Blanket automatic centering roller
- 14 - Endless blanket
- 15 - Decatising roller dia 1200 mm.
- 16 - Oscillatin arms plaiter
- 17 - Anti-static bars

OPZIONI:

- A - Spazzola pulizia sottopezza
- B - Faldatrice a falda piana e a sviluppo variabile
- C - Centratore a doghe
- D - Spazzolatura tessuto
- E - Seconda camera di vaporizzazione

OPTIONS:

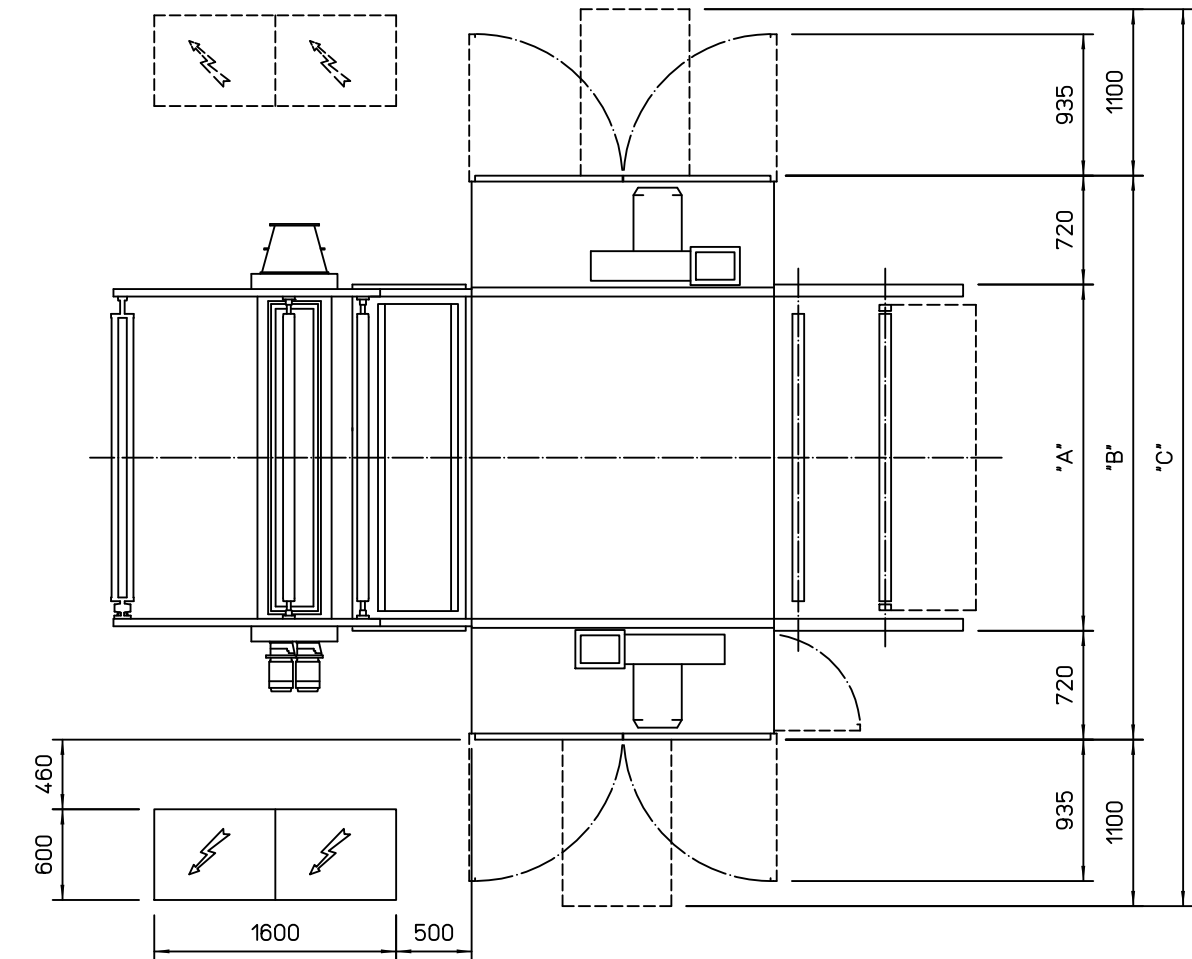
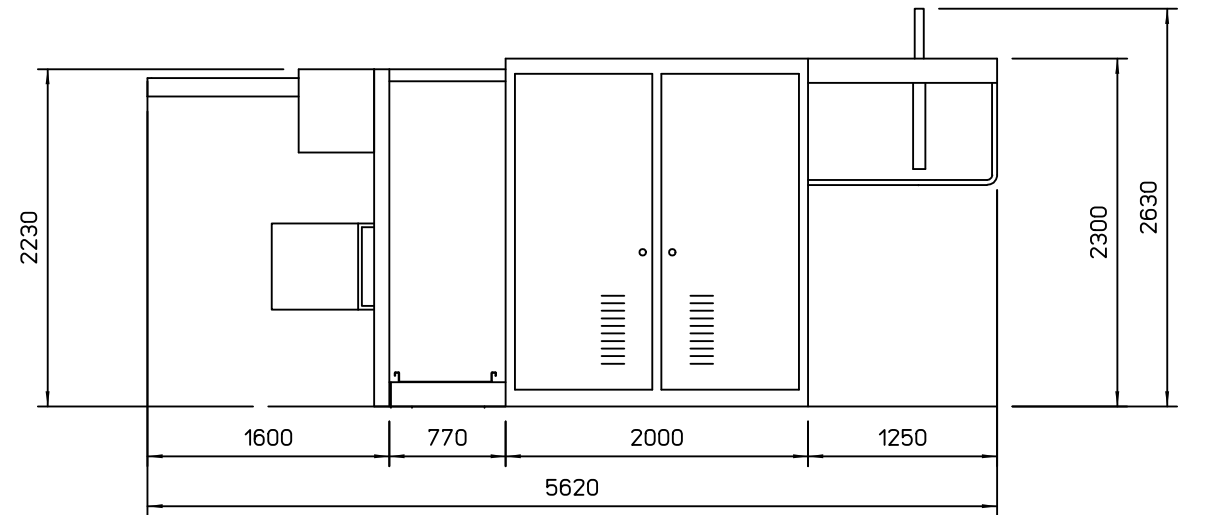
- A - Blanket brushing unit
- B - Flat or variable length plaiting unit
- C - Fabric centering unit
- D - Fabric brushing unit
- E - Second steaming chamber

Tav.	"A"	"B"	"C"
1900	2290	3730	5930
2400	2790	4230	6430

"MD/2" CARATTERISTICHE TECNICHE

Altezza utile di lavoro
 Altezza cilindri
 Altezza sottopezza
 Velocità meccanica
 Diametro cilindro decatitore
 Potenza elettrica installata
 Potenza elettrica assorbita
 Alimentazione vapore saturo
 Consumo vapore (macchina standard)
 Consumo vapore (con seconda camera di vaporizzazione)
 Alimentazione aria compressa
 Consumo aria compressa
 Peso totale
 Livello medio di rumorosità
 DATI INDICATIVI

1700 mm.	2200 mm.
1900 mm.	2400 mm.
1800 mm.	2300 mm.
3-30 m/min.	
1200 mm.	
45 KW	
38 KW	
4-5 bar	
400 Kg/h	500 Kg/h
600 Kg/h	700 Kg/h
7-8 bar	
100 NI/h	
4500 Kg.	4900 Kg.
< 85 dB(A)	



"MD/2" TECHNICAL CHARACTERISTICS

Working width
 Rollers width
 Blanket width
 Mechanical speed
 Decatising roller diameter
 Connected load
 Absorbed load
 Saturated steam feeding
 Steam consumption (Standard machine)
 Steam consumption (With Second steaming chamber)
 Compressed air feeding
 Compressed air consumption
 Total weight
 Average noise level
 INDICATIVE DATA

MACCHINA	Sezione funzionale	MULTIDECAT/2	Data	Dis.L. Decchino	Verif. L. Decchino
	Functional section		Scala 1 : 25	CODICE/DISEGNO	REV.
SANTEX RIMAR GROUP	SperottoRimar	LA DITTA SI RISERVA A TERMINI DI LEGGE LA PROPRIETA' DI QUESTO DISEGNO CON DIVIETO DI RIPRODURLO O DI RENDERLO COMUNQUE NOTO A TERZI O A DITTE CONCORRENTI SENZA LA SUA AUTORIZZAZIONE SCRITTA .	Sost. dal	3.67296.000	0
			Sost. il		