

GENERAL

	Page		Page
AATCC/ISO Grey Scales	138	Laboratory Air Conditioning Package Systems	135
AATCC/ISO Light Fastness Standards	138	Laboratory Air Conditioning Unit — QUESTIONNAIRE	137
AATCC/ISO Multifiber Adjacent Fabrics	140	Laboratory Conditioning Chambers	136
AATCC/ISO Seam Smoothness Photographs	142	Lightmeter	129
AATCC/ISO Smoothness Appearance Replicas	141	Microscopy Yarn & Fabric Holder Set	125
AATCC Barré Assessment Scales	142	PANTONE Textile Color Systems	133
AATCC Chromatic Transfer Scale, Nine Step	141	Phenotest Yellowing Test Products	107
AATCC Crease Appearance Replicas	141	Pocket pH Meter	120
AATCC Stain Release Replicas	143	Pocket Stroboscope	111
Adventurer Electronic Balances	122	Pocket Temperature Meter	120
Assessment and Grading Masking Sets	139	Portable Microscope	128
Buffer Solutions for pH Calibration	120	Portable Electronic Balance	122
Colorchex Color Assessment Cabinet	130-132	Precision Mechanical Torsion Balance	121
Colorchex N7 Assessment Cabinet	132	Precision Monocular Microscope	125
Combined Laboratory Ovens & Incubators	129	Precision Trinocular Microscope	125
Conditioning Shelving Unit For Laboratory	138	Reverse Osmosis Water Purity Systems	109-110
Conversion Tabs	145-147	Safety Testing Equipment for Child-Related Products	112-113
Digital Microscope Systems	126-127	Safety Testing Equipment for Snaps, Buttons and Other	116-117
Digital pH/Temperature Meter	119	Garment Attachments	116-117
Digital pH/Temperature Meter	119	Silent Laboratory Compressor	144
Digital Relative Humidity & Temperature Meter	124	SnapRite Motorized Snap Tester	118
Digital White-Light Stroboscope	111	Stereo Microscope	128
Electronic High Temperature Thermometer	121	Stereo Zoom Microscope	128
Electronic Laser Tachometer	111	Surface pH Pencils	119
Electronic Moisture Meter	134	Textile Standards and Test Methods	144
Electronic Temperature and Humidity Recorder	124	VeriVide Color Assessment Cabinets	131
Electronic Thermohygrograph	123	VeriVide Viewing Board	132
Electrical Safety Testing Equipment	114-115	Water Purification Systems	108
Explorer Electronic Balances	122	Wet and Dry Bulb Hygrometer	123
Farnsworth-Munsell 100 Hue Test Kit	134	Whirling Hygrometer	124
Fluorescence Suppressor	142		
Fluorescent Illuminated Magnifier	143		
Indelible Textile Marking Pens	110		
Ishihara Colour Blindness Test Charts Kit	134		
ISO Humidity Control Fabric B02	139		
ISO Standard Depth Scales	143		

A range of apparatus and consumable items used to assess the likelihood of textile based products to yellow in transit or storage.

The products can be used on white or pastel colored yarns, fabric or finished garments.

The test is intended only to predict the yellowing which may be caused by the action of oxides or nitrogen on yellowable phenols. The test is not intended to deal with any other causes of yellowing such as fading of optical brighteners, gas fume fading or other such causes.

Phenotest has shown to be very useful in controlling the quality of white and pastel colored goods and can significantly reduce customer complaints due to this factor.

- Impregnated test paper Impregnated with a methanol solution which contains the phenolic chemical.
- Control fabric. The test is considered valid if the control fabric has turned yellow.
- Glass plates 100 x 40 x 3mm to separate specimens.
- BHT-free film to wrap each set of test specimens in.
- Perspirometer to provide uniform contact between the test papers and fabric samples under a standard load.
- Incubator/oven. The test specimens are exposed for 16 hours at 50°C ± 3°C.
- Grey scale for assessing staining.
- Template for cutting BHT-free polyethylene film.

The test paper is folded length ways and the specimen to be tested is sandwiched between the two sides of the paper. The sandwich is then placed between two glass plates.

A standard package consist of 5 test specimens and 1 piece of control fabric. This requires a total of seven glass plates. If more than 5 specimens are required to be tested additional sets of specimens must be made. Each set of specimens and control fabrics are wrapped in BHT-free film and sealed with ordinary adhesive tape. Up to three such sets of specimens are placed in a perspirometer, and the pressure is kept uniform by the application of a standard weight. Up to 4 perspirometers are placed in an incubator at a temperature of 50°C ± 3°C for 16 hours. This allows one days samples to be treated overnight, ready to be assessed the next day.

At the end of the 16 hour test period, the perspirometers are removed from the oven and allowed to cool. The sets of specimens are unwrapped. If the control fabric has turned yellow, the specimens are compared with their original untested specimens and assessed with the standard grey scale for staining.



ORDERING INFORMATION

- 107345 Impregnated Test Paper, pack of 30
- 107346 Impregnated Test Paper, pack of 100
- 203038 Phenotest Control Fabrics 100 x 30mm, pack of 30. (30 individual tests).
- 106930 Phenotest BHT-Free Plastic Film, pack of 15m x 760mm wide. (30 individual tests).
- 200929 Phenotest Glass Plates 100 x 40 x 3mm. (Pack of 10).
- 201053 Film Cutting Template.
- G001F Phenotest Evaluation Kit - Allows prospective users to easily evaluate their need for these products (requires oven/incubator, perspirometer and grey scale (staining) ISO OR AATCC. Kit consists of:
7 Glass Plates.
12 Impregnated test papers (Foil Wrapped).
2 Control Fabrics (Foil Wrapped).
0.5m BHT-Free Plastic Film.
1 Set of Instructions.
- M231 PERSPIROMETER - To determine colour fastness to perspiration of textiles. Provided with 2 stainless steel frames each with a capacity of 20 samples of 10cm x 4cm held between acrylic separator plates. Loading weights for BS, ISO and AATCC Standards are included. An electric incubator is required. (See G209A/B).
- G209A COMBINED LABORATORY OVEN & INCUBATOR
30 Litres capacity. Dual temperature ranges (25-110°C ± 0.25°C, 50-250°C ± 0.75°C). Stainless steel interior, circulation fan and door thermometer, 2 shelves.
- 201194 GREY SCALE A03 - For assessment of staining to meet ISO/SDC/BS Standards.
- 202161 GREY SCALE No. 2 - For assessment of staining to meet AATCC Standards.

STANDARDS	ISO 105-X18:2007	
	M&S C20B	Next TM43

"Select Analyst" water purification systems producing laboratory water equivalent to double distilled quality. Supplied complete with integral or external reservoir (selective) water quality indicator and installation kit, no electrical supply required.

Typical Water Quality:

Inorganics residue : CA < 100, NA < 100, K < 100, Si < 20, Pb < 100 (all ppm)
 Residual Solids : < 0.5 ppm.
 Heavy Metals : < 0.1 ppb
 pH : Neutral 6-8
 Resistancy at 25°C (ASTM D1193-99E1): 1-10M cm
 BS EN ISO 3696: Grade II
 Bacteria + Pyrogens : > 99% Rejection
 TOC : < 50 ppb

WEIGHT :	19kg (Shipping)	42lb	
	39kg (Shipping)	86lb	
DIMENSION	Width	Depth	Height
	408mm	548mm	630mm
	16 inch	22 inch	25 inch
STANDARDS	BS EN ISO 3696	ASTM D1193-99E1	
ORDERING Info.	G003E	Analyst Water Purifier 20L/Day at 12L/Hr (Internal Tank)	
	G003F	Analyst Water Purifier 50L/Day at 12L/Hr (External Tank)	
	300090	Pretreatment Cartridge and Polishing Cartridge	



G003 A200 - A400

Small economical completely pre-assembled Reverse Osmosis Water Systems including pretreatment sections, high performance RO Units, Pressure type Water Storage Tanks, and DI Water "Polishers". Except for the Pressure Tank, the systems are pre-assembled and provided with quick connect/disconnect fittings for easy low-cost installation.

Applications

- Xenon Arc Weather-Ometers and Fade-Ometers
- Corrosion and Humidity Cabinets
- UV-Condensations weathering devices
- Laboratory applications requiring high purity Water

Standard Features

- Economical to purchase, install and operate
- TFC Membrane with 98% Rejection
- Includes Booster Pump and Electric Shut-off valve for higher performance
- Capacity of 200, 300, 400 Gallons/Day
- Delivers RO or RO/DI Water under pressure
- Includes Pretreatment, RO, RO Quality Monitor, Storage Tank, Post DI water "Polisher"
- Choice of RO water for Corrosion/Humidity Cabinets or RO/DI water for high purity
- Compact Frame: floor or wall mounting
- 115VAC transformer with low voltage at Booster Pump and Water Quality Monitor

Options

- Larger Pressure Storage Tanks up to 86 Gallons
- Permeate Pump for faster tank fill-up
- DI water Quality Monitor
- Water Softeners, UV Sterilizers, larger systems
- 230 Volt, 50 Hz operation



A200 RO System with 14 gallon tank



A400 RO System with 34 gallon tank

Specifications

Model	A200	A300	A400
Production Capacity, Permeate Water	200 GPD/8GPH**	300 GPD/12GPH	400 GPD/16GPH
Membrane Element, No., Rejection rate	TFC, 2, 98%	TFC, 3, 98%	TFC, 3, 98%
System Recovery Rate	38%	44%	46%
Pressure Pump & Electric Shut-off Valve	Included	Included	2 Pumps Included
Feed Water Limits:			
Pressure Regulator Required	40-60 psi		
Temperature	40-110 F		
Hardness & Iron	Less than 7 grains/Gal. and 0.3 ppm Iron - All Models		
pH	3-11		
Pump & Tank Shut-off Pressure	40 psi		
Standard Tank Size	14 Gal. (9 Gal. drawdown)	34 Gal. (18 Gal. drawdown)	34 Gal. (18 Gal. drawdown)
Optional Tanks	34 Gal. (18 Gal. drawdown)	44 Gal. (24 Gal. drawdown);	44 Gal. (24 Gal. drawdown);
Permeate Quality Monitor, Digital, 0-999ppm	Included		
Feedwater Pretreatment, Two 20" Filters	5 Micron Sediment and Carbon Block Cartridges, 2.5 in x 20 in		

**Production of RO Permeate/Product Water is listed for 77 °F (25 °C) feedwater temperature. Production is reduced by 1.5% for each degree F below 77 °F. Example, at 45 °F, production is reduced by 50%. Feedwater pressure and quality, tank pressure, and maintenance of filters and membranes also affect production.

WEIGHTS		300079	300081	300083
System		17.3 kg 38 lb	18.2 kg 40 lb	20.5 kg 45 lb
	Standard Tank 34 Gal.	10.9 kg 24 lb	27.7 kg 61 lb	27.7 kg 61 lb
Optional Tank 44 Gal.		31.8kg 70 lb		

SYSTEM DIMENSIONS (Floor or Wall Mount)		Width	Depth	Height
300079,300081&300083		50.8 cm 20 in	25.4 cm 10 in	76.2 cm 30 in

TANK DIMENSIONS		300079	300081&300083
Standard Tank		14 gal 16 in D x 23 in H	34 gal 22 in D x 30 in H
	Optional Tanks	34 gal 22 in D x 30 in H	44 gal 22 in D x 37 in H

ELECTRICAL: Booster Pump & Shut-off Valve	115VAC, 50/60Hz Transf. down to 24VAC, 2A (Optional) 220/230VAC 50/60Hz available
Permeate Water Quality Monitor	115VAC, 50/60Hz Transf. down to 12VDC; (Optional) 220/230VAC, 50/60Hz down to 12VDC



Deionized Water Quality Monitor

ORDERING INFORMATION

- 300079 Reverse Osmosis System 200 GPD
- 300081 Reverse Osmosis System 300 GPD
- 300083 Reverse Osmosis System 400 GPD
- G003 A1 Deionized Water Quality Monitor (specify 115VAC or 230VAC)
- 300078 Connection Kit for Atlas Light fastness Testers
- 300080 One year operating supply package for 200 GPD
- G003 A4 One year operating supply package for 300 GPD
- 300084 One year operating supply package for 400 GPD
- 300085 230V Transformer
- 300086 34 Gallon optional tank
- 300087 44 Gallon optional tank

Available in fine, medium and broad ball-tips to cover all fabric types. Selection depends on the surface structure of fabrics; the finest tip used on fine, tightly woven fabrics, and the broadest on open, coarse fabrics. The inks are totally resistant to all textile processes including dry cleaning. Colors available: yellow and black (low cost, in stock), blue, orange, red and white (special order, 2 weeks).



WEIGHT (Pack of 6)	0.5 kg	1.1 lb	
DIMENSIONS (Pack of 6)	Width	Depth	Height
	100 mm	100 mm	150 mm
	4 inch	4 inch	6 inch

- | | | |
|-----------------------------|--------|---|
| ORDERING INFORMATION | G037A | Texpen Indelible Textile Marking Pens. Fine (Pack of 6). Specify yellow or black |
| | G037AA | Texpen Indelible Textile Marking Pens. Fine (Pack of 6). Specify blue, orange, red or white |
| | G037B | Dalomarker 2T Indelible Textile Marking Pens. Medium, general purpose (Pack of 6). Specify yellow or black |
| | G037BB | Dalomarker 2T Indelible Textile Marking Pens. Medium, general purpose (Pack of 6). Specify blue, orange, red or white |
| | G037C | Dalomarker 2W Indelible Textile Marking Pens. Medium, for wool (Pack of 6). Specify colour |
| | G037D | Dalomarker 4T Indelible Textile Marking Pens. Broad general purpose (Pack of 6). Specify colour |
| | G037E | Dalomarker 4W Indelible Textile Marking Pens. Broad, for wool (Pack of 6). Specify colour |

G105C

Digital White-Light Stroboscope

To determine the speed and freeze the motion of reciprocating or rotating objects. Battery operated with external battery and charger, 60 to 30,000 flashes/min, shatterproof xenon flash tube, 360° phase control, fully microprocessor controlled.

Optional external trigger, controls flashrate by input from measured object.



WEIGHT	2 kg	4.4 lb	
DIMENSIONS (In Case)	Width	Depth	Height
	250 mm	150 mm	150 mm
	10 inch	6 inch	6 inch
ORDERING Info.	300102	Digital White-Light Stroboscope	
	300103	Spare Flashlamp	
	G105E	Optical External Trigger	

G105F

Pocket Stroboscope

For taking non-contact RPM measurements and inspecting moving parts. NiMH battery, 800 Lux flash, ± 1 RPM resolution, Flash range 30-12500 FPM, May be externally triggered.



WEIGHT	0.5 kg	1.1 lb	
DIMENSIONS	Width	Depth	Height
	200 mm	150 mm	75 mm
	8 inch	6 inch	3 inch
ORDERING Info.	300105	Pocket Stroboscope	
	300106	Spare Xenon flash tube	

G106

Electronic Laser Tachometer

Professional model laser optical/contact tachometer kit in fitted hard case with unique inverting display and laser optical system offering best performance for all applications with a range up to 2 metres (80inches). Contact adaptor allows surface measurement of revolutionary and linear speeds. 3-99999RPM capacity, product counter and timer, on target indicator and low battery indicator. Disposable battery powered available.



WEIGHT	0.35 kg	0.75 lb	
DIMENSIONS (In Case)	Width	Depth	Height
	250 mm	100 mm	50 mm
	10 inch	4 inch	2 inch
ORDERING Info.	201073	Electronic Laser Tachometer	

The SDL Atlas Group has developed the most comprehensive range of Child-related products Testing Equipment available in the world today in collaboration with major commercial testing organizations and end users. The products have been designed to comply with International Safety Standards such as:

STANDARDS 16 CFR CPSC USA ASTM F963 (USA) EN 71 (EUROPE)

G201A 1-3 Sharp Point Tester

To determine whether accessible sharp points on Child-related products are likely to cause injury. If the accessible sharp point penetrates a specified depth into the small rectangular opening of the tester, the LED is illuminated to indicate that the point is unacceptably sharp. Child-related products intended for use by children under 8 years old are subject to this requirement before or after use & abuse testing.



G201A 1-3 Sharp Point Tester

G201A 4-6 Sharp Edge Tester

To determine whether accessible edges on Child-related products are likely to cause injury. A self adhesive PTFE tape is attached to a mandrel, which is then rotated for a single 360-degree revolution along the accessible edge being tested. If the tape is cut in half or longer in length (approx. 13 mm), the edge is identified as a hazardous sharp edge. Child-related products intended for use by children under 8 years old are this requirement before or after use & abuse testing.



G201A 4-6 Sharp Edge Tester

G201A 7-8 Accessibility Probes

To determine whether any part or component of a Child-related products can be contacted by the probe. The probe simulates the finger of the infant or child touching the accessible points or edges of a Child-related products, which may then be subject to tests of sharp points or sharp edges. Accessibility probes are designed for two age groups:

Probe A for 0-36 months Probe B for 37-96 months

G201A 7-8 Accessibility Probes

G201A 9-10 Small Parts Cylinder

To determine whether Child-related products & other articles intended for use by children under 3 years old present choking, aspiration, or ingestion hazards because of small parts. If any objects can fit completely into the cylinder without compressing & in any orientation, it is defined as a "Small Part". Its internal dimensions simulate the fully expanded throat of a child under 3 years old.



G201A 11-16 Torque Test Kit

G201A 17-19 Push/Pull Gauge

To determine whether components of Child-related products can be removed by a certain torque force. A torque-measuring device is used in conjunction with a torque clamp to record the applied force. Any projection part or assembly of a Child-related products that a child can grasp with at least the thumb & forefinger or the teeth shall be subject to the torque test.



G201A 17-19 Push/Pull Gauge



G201A 9-10 Small Parts Cylinder

G201A 20-21 Tension Test Kit

To determine whether the components of Child-related products can be removed by tensile force. A Force gauge is used in conjunction with a clamp to record the force applied. Any projection, part or assembly of a Child-related products that a child can grasp with at least the thumb & forefinger or the teeth shall be subject to the tension test.



G201A-20

G201A 27-28 Impact Flooring Medium

A standardised surface onto which a Child-related products can be dropped from a certain height to simulate possible damage which may occur by falling from a crib, table or counter top or other impact situations. After testing, the Child-related products is examined for possible hazards such as sharp edges, sharp points and small parts.



G201A-21



G201A-22

G201A 29-30 Bite Test Clamp

Simulates a child biting the accessible area of Child-related products. The part of the Child-related products being tested is placed in a bite



G201A-23

test clamp & a specified force is applied for a specified period. The Child-related products is then tested to ascertain whether or not any hazards result from the bite test such as sharp points/ sharp edges / small parts.

G201A 31 Compression Head

To simulate the subjecting of a Child-related products to mechanical damage through compressing or other action likely to be performed by a child. After testing, the Child-related products may be tested for sharp edges, sharp points & small parts.

G201A 32-33 Flexure Tester

To determine whether metallic wires or materials used for stiffening or retention of form in Child-related products can be easily bent or broken. Potential hazards of sharp points & sharp edges.

G201A 34 Test Fixture for Small Balls

To determine whether loose balls in Child-related products intended for children under 36 months will pass entirely through the test fixture under the influence of their own weight and without compression. A ball which can pass through the test fixture is determined to be a "Small Ball".

G201A 35-37 Rattle Test Fixtures

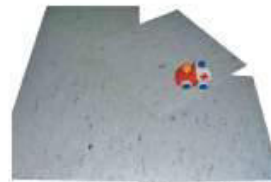
To determine whether rattles for infants of up to 18 months old present choking or suffocating hazards. The rattle is placed in the opening of test fixture. If any part of the rattle can pass through the opening without being pushed or pulled, the rattle has failed. For other rattles incorporating nearly spherical, hemispherical or circular flared ends, a Supplemental Rattle Test Fixture is available.

G201A 38 Pacifier Test Fixture

To determine whether the pacifiers for infants present choking or suffocating hazards. A pacifier is placed centrally in the opening of test fixture. The nipple is subjected to a tensile force of 2 lbs and held for 10 seconds. If the shield is pulled through the fixture, the pacifier has failed.

G201A 39 1 Kg Impact Tester

To simulate the mechanical damage through an impact action likely to be performed by a child. Assessment of sharp edges, sharp points and small parts may be carried out after impact.



G201A 27-28 Impact Medium



G201A-29 Bite Test Clamp



G201A-31 Compression Head



G201A 32-33 Flexure Tester

G201A-34 Test Fixture for Small Balls



G201A-35 Rattle Test Fixture

ORDERING INFORMATION

105342	ASTM Sharp Point Tester With Weight	105323	Two Pronged Clamp With Screw
105343	EN Sharp Point Tester With Weight	105702	Seam Test Clamp
201800	ISO 17025 Certificate, Sharp Point	105325	Long Nose Vise Grip
G201A4	Sharp Edge Tester	105326	General Vise Grip
201939	PTFE Tape for Sharp Edge Tester	201727	ISO 17025 Certificate, Push/pull Gauge
201802	ISO 17025 Certificate, Sharp Edge	201979	US Impact Medium (Set Of 9)
202076	Accessibility Probe A (0-36 Months)	202069	EN Impact Medium
202075	Accessibility Probe B (37-96 Months)	105276	Bite Test Clamp
105272	Small Parts Cylinder (Metal)	201804	ISO 17025 Certificate, Bite Test
105273	Small Parts Cylinder (Plastic)	202060	Compression Head For Force Gauge
201803	ISO 17025 Certificate, Small Part	202071	US Flexure Tester (Set Of 2)
201905	Torque Gauge 9BTG	202070	EN Flexure Tester (Set Of 2)
105335	Torque Clamp (Central Screw Type)	105277	Test Fixture For Small Balls
105334	Torque Test Clamp (Standard)	202074	Rattle Test Fixture (Oval)
105336	Flat Vise Clamp	202073	Supplemental Rattle Test Fixture
201944	Table Vise	201805	ISO 17025 Certificate, Rattle Test
200786	ISO 17025 Certificate, Torque Gauge	202072	Pacifier Test Fixture
201737	Push/Pull Gauge Fb-20K	202061	1 Kg Impact Tester
201733	Push/Pull Gauge Fb-50LB		
201730	Push/Pull Gauge Fb-200N		
105322	Three Pronged Clamp		

Flammability Safety Testers**SAFQ GW-3020 Glow-wire Tester**

Over-heated components resulted from malfunctions such as overload, short circuit, poor connection or others may set a product to fire. The Glow Wire Tester simulates an overloaded resistor, applies heat to the specimen for a short period of time. Through observation and measurement, the fire-hazard of the specimen can be determined. It is usually used to test plastic and non-metallic components in industries such as electrical and electronic components, electrical home appliances, etc.

WEIGHT	80kg	177lb	
DIMENSIONS	Width	Depth	Height
	1000 mm	650 mm	1250 mm
	40 inch	26 inch	50 inch
STANDARDS	IEC 60695-2-10/11/12/13(2000)/60335-1/60065/1058-1		
	IEC 669-1/60238(1998)/60670/60529/60950/900/1010		
	GB/T 5169.10(1991)/5169.11(1997)		
	GB 7000.1(2002)/4706		

**SAFQ NF-3030 Needle Flame Tester**

Insulation and combustible materials used inside the electrical and electronic products may propagate flames when a failed component ignites, which may develop into a fire that endangers the safety of operators and properties. Needle Flame Tester is used to assess the fire hazard of materials. A Needle Flame Tester consists of a Ø0.9mm needle burner tilted at 45° from the vertical, and fuelled with butane gas. The fire hazard of the specimen is assessed by measuring the burning duration, and the ignition of the wrapping tissue and white pine board.

WEIGHT	80kg	177lb	
DIMENSIONS	Width	Depth	Height
	1000 mm	650 mm	1200 mm
	40 inch	26 inch	48 inch
STANDARDS	IEC 60695-11-5(2004)/60695-2-2(2004)		
	EN 60695		
	GB 5169.5/4706		



Physical Safety Testers**SAFQ SI-202X Spring-Operated Impact Tester**

- 1) Single Energy Level Spring Hammer
- 2) Universal Spring Hammer

To determine the robustness level of enclosure, steering bar, handle, indicator, signal light, etc. of home appliances and accessories, and the similar products

STANDARDS	IEC 1010-1/60065/60068-2-75/60309-1/60320-1/60335-1
	IEC 60598-1/0601-1/60745-1/1058-1
	EN 61010-1/60309-1/60320-1/60400/60598-1
	EN 60601-1/60730-1/61058-1
	GB 4706.1/2099.1/T2423.44(1995)/8898/7000.1
	UL 1244

**SAFQ BP-2030 Ball Pressure Test Device**

To determine dimensional stability of parts made of non-ceramic and non-metallic insulating materials when exposed to high temperature up to 250°C.

STANDARDS	IEC 60695-10-2(2003)/60884-1/60238/60309-1/60320-1
	IEC 60335-1/60598-1/60669-1/60670/60967
	EN 60238/60309-1/60335-1/60669-1/60967
	VDE 0471 part 2-5/0620/0616 part 1/0623 part 1
	VED 0630 part 1/0632 part 1/0700 part 1/0725 part 1
	GB 2099.1/4703.1/4943
	ISO 3290-2



G201AA

Safety Testing Equipment for Snaps, Buttons and Other Garment Attachments

G201AA1-58 Snap Tester

To determine the holding or breaking strength of prong-ring attached snap fasteners onto garments. Consists of an Upper Snap Clamp, a Lower Fabric Clamp & a Force Gauge mounted on a Stand. The snap component is gripped by the Upper Snap Clamp and the garment is fixed to the Lower Fabric Clamp. By turning the Top Flywheel, the operator can apply a specific force and the holding force or the breaking strength can be recorded.

Capability can be enhanced with clamps & accessories for testing of other Snaps, Jean Buttons, Four Hole Buttons & Garment Accessories such as Zippers, Bows, Appliqué, Toggles, Hooks/Bars and D-rings amongst others.

The detachment of a snap or other part may be classed as small parts; whilst broken small parts may require sharp point & sharp edge testing. As a result, additional testing equipment may be recommended such as:

Small Parts Cylinder (G201A9-10)

Sharp Point Tester (G201A1-3)

Sharp Edge Tester (G201A4-6)

Button Impact Tester (M289)

Patent registration number:

Japan 4268127

USA 7152489

Taiwan 1 249614

Vietnam 5774

India 203545

Hong Kong 1076507

Turkey TR200403224B, TR200503819B

China 03812516.1

WEIGHT			
STANDARD/GAP/H&M	23kg	50lb	
NIKE	27kg	60lb	
DIMENSIONS			
	Width	Depth	Height
STANDARD/GAP/H&M	225 mm 9 inch	280 mm 11 inch	735 mm 29 inch
NIKE	225 mm 9 inch	280 mm 11 inch	735 mm 29 inch



G201AA1-3



105294



105295



105338-105339



105300



G201AA46



G201AA44

Order Code	Item Description	Retailer Packages				Application
		Standard Package	GAP&H	M	Nike	
Package		★ Included	X Not included			
105283	Snap Tester W/FB-30k	★	X	X	X	Standard Package
105282	Snap Tester W/FB-30k For Gap	★	★	X	X	Baby Snap only
105284	Snap Tester W/FB-30k For H&M	X	X	★	X	Snaps/ Buttons/ Garment Accessories
105286	Snap Tester W/ FB-100lb For Nike	X	X	X	★	Snaps/ Buttons/ Garment Accessories
Fixtures & Accessories						
201736	Force Gauge Fb-30k	★	★	★	X	Displays force up to 30 kg capacity
201732	Force Gauge Fb-100lb	X	X	X	★	Displays force up to 100 lb capacity
105310	Bench Top Stand W/plate For Gap	★	★	X	★	Accurate force application
105311	Bench Top Stand W/plate For H&M	X	X	★	X	Accurate force application
105303	Lower Fabric Clamp Rubber Cushion (Modify)	★	★	★	★	To grip Fabric Sample with constant force to avoid slippage
105320	Calibration Weight ,15Lbs	★	★	★	★	To verify the accuracy of Force Gauges
106976	Upper Snap Toggle Clamp (Modify)	★	★	★	★	For female snap parts
105294	Upper Stud Clamp	★	★	★	★	For male snap parts
105300	Lower Grasp Button Kit (Modify)	★	X	★	★	Accessory for Lower Fabric Clamp for Jean buttons & larger buttons up to 30 Ligne
105301	Upper Grasp Button Kit	★	X	X	★	For Jean Buttons & Four Hole Buttons
105290	Upper Snap Clamp (Capacity 100Lb)	X	X	X	★	For larger female snaps up to 100 Lb capacity
105295	Upper Stud Clamp (Capacity 100lb)	X	X	X	★	For larger male snaps up to 100 Lb capacity
105338	Extended Peg Hook For Snap Tester	X	X	X	★	Hook for Zipper Pulls
105339	Zipper Pull Tab Test Fixture	X	X	X	★	To hold Zipper Pulls
105328	Seam Clamp 4" With Screw Connector	X	X	X	★	To grip Side Tabs/ Bows/ Tassels
105356	Two Pronged Clamp With Screw Connector	X	X	X	★	Two prongs for D-rings, Zipper Stops, Hooks/ Bars
105329	Locker Plier With Screw Connector	X	X	X	★	For small metallic decorations such as Appliqué
105304	Vise For Snap Tester	X	X	X	★	Lower Vise Grip for different sample sizes
105313	Special Back Plate For Nike Fb-100lb	X	X	X	★	To extend the maximum traveling height of Force Gauge
105341	Goggles	X	X	★	★	Eye protection

***Remarks:**

Standard Package also complies with the test requirements of other retailers such as Levi's, AMC, Target, Federated, C&A, and M&S amongst many. H&M Package (G201AA2) also includes Small Part Cylinder (Plastic)(G201A9) & Long Nose Vise Grip (G201A23) & Three Pronged clamp(G201A20). Nike Package (G201AA3) is for testing of snaps/ buttons and garment accessories only. To comply with Nike's Safety Requirements, additional equipment should be ordered as follows :

ORDER CODE ITEM DESCRIPTION

- 105272 Small Parts Cylinder(Metal)
- 105273 Small Parts Cylinder(Plastic)
- 105277 Small Balls Fixture
- 105342 ASTM Sharp Point Tester with Weight
- 201905 Torque Gauge Model 9 BTG
- 105335 Torque Clamp (Central Screw Type)
- 201944 Table Vise



105290



105301



105304

Motorized instrument for determining the holding or breaking strength of snap fasteners onto garments. The motorized device eliminates operator variability such as application of the load, consistent holding force at the top end, precision hold times, and provides more accurate measurements via a load cell and digital display. The SnapRite is supplied with an Upper Snap Clamp (Linge 12-16), Upper Stud Clamp, and a Lower Fabric Clamp. Capability can be enhanced with clamps & accessories for testing of other Snaps, Jean Buttons, Four Hole Buttons & Garments Accessories such as Zippers, Bows, Appliqué, Toggles, Hooks/Bars, and D-Rings, amongst others.

The detachment of a snap or other part may be classed as small parts; whilst broken small parts may require sharp point & sharp edge testing. As a result, additional testing equipment may be recommended, such as:

- Small Parts Cylinder (G201A9-10)
- Sharp Point Tester (G201A1-3)
- Sharp Edge Tester (G201A4-6)
- Button Impact Tester (201085)

SDL Atlas Ltd. is an authorized licensee of YKK Corporation.



WEIGHT	40 kg	88 lb	
DIMENSIONS (In Case)	Width	Depth	Height
	410 mm	450 mm	780 mm
	16 inch	17 inch	30 inch
STANDARDS	ASTM D7142 - 2/ F 963	CFR 1500	ISO 8124
	EN 71 Part 1	GB 6675	M&S P115A
	ORDERING Info.		
	G201M	SnapRite	
	105301	Upper Grasp Button Kit	
	105290	Upper Snap Clamp (Capacity 100Lb)	
	105295	Upper Stud Clamp (Capacity 100Lb)	
	105338	Extended Peg Hook	
	105339	Zipper Pull Tab Test Fixture	
	105356	Two Pronged Clamp with Screw Connector	
	105329	Lock Pliers with Screw Connector	
	105304	Vice for Snap Tester	
	105341	Goggles	
	107038	Upper Snap Clamp (Linge 16-21)	
	107035	Upper Snap Clamp (Linge 21-30)	
	107213	Lower Grasp Button Kit (Linge 16-30)	

G202

Digital pH/Temperature Meter

With digital display, real time clock, 0.00-14.00 pH, -10°C to + 100°C. With automatic calibration, temperature compensation and buffer recognition, provided with temperature probe, pH probe and cables. Buffer solutions must be ordered separately. Fitted carrying case. Powered by 9 Volt Battery.



WEIGHT	1 kg	2.2 lb	
DIMENSIONS (In Case)	Width	Depth	Height
	230 mm	220 mm	80 mm
	9.5 inch	9 inch	3 inch
STANDARDS	M&S C7	Next TM33	
ORDERING Info.	201219	Digital pH/Temperature Meter (HI8424)	
	201220	Electrode Holder and Cantilever Stand	
	200968	Buffer Solutions 20ml, 10 each pH 4, 7 and 10, Ready Prepared in Sachets	

G202A

Surface pH Pencils

To measure the pH of any surface, wet or dry. Can detect acid or alkali residues in 15-30 second. Reads from 0-13 pH with included color chart. Long lasting, use for thousand of individual tests. Also measures pH of solutions when used with a neutral surface such as glass or porcelain. Supplied in packs of 3 mechanical pencils and 2 charts.



WEIGHT	200 g	0.5 lb	
DIMENSIONS	Width	Depth	Height
	75 mm	100 mm	200 mm
	3 inch	4 inch	8 inch
ORDERING Info.	201122	Surface pH Pencils (pack of 3)	

G202B

Digital pH/Temperature Meter

With digital display, real time clock, 0.00-14.00 pH, -10°C to + 100°C. With automatic calibration, temperature compensation and buffer recognition, provided with temperature probe, pH probe and cables. Buffer solutions must be ordered separately. Fitted carrying case. Powered by 9 Volt Battery.



WEIGHT	1.4 kg	3.1 lb	
DIMENSIONS (In Case)	Width	Depth	Height
	82 mm	66 mm	220 mm
	3.2 inch	2.6 inch	8.7 inch
ORDERING Info.	201103	Digital pH/Temperature Meter & Printer	
	201220	Electrode Holder & Cantilever Stand	
	200968	Buffer Solutions	
	300114	Mains Adaptor (220 or 110v)	

G202D

Pocket pH Meter

Electronic/battery operated (700 hours continuous). 0-14pH x 0.1pH, operating temperature 0-50°C, LCD display, pocket clip.

WEIGHT	70 g	0.15 lb	
DIMENSIONS	Width	Depth	Height
	29 mm	15 mm	142 mm
	1.2 inch	0.5 inch	5.6 inch
ORDERING Info.	201106	Pocket pH Meter	



G202E

Pocket Temperature Meter

Electronic/battery operated (700 hours continuous). -40 to +140°C x 0.1°C, LCD Display, teflon coated hinged probe, pocket clip.

WEIGHT	50 g	0.1 lb	
DIMENSIONS	Width	Depth	Height
	30 mm	20 mm	150 mm
	1.2 inch	0.8 inch	6 inch
ORDERING Info.	201109	Pocket Temperature Meter	



G202H

Buffer Solutions for pH Calibration

All pH meters should be calibrated periodically using standardized solutions at different pH levels. These 20 ml sachets offer an accurate and inexpensive answer. A pack consists of 10 each 20 ml sachets pH 4.01, 7.01, 10.01.

WEIGHT	0.6 kg	1.3 lb	
DIMENSIONS (each)	Width	Depth	Height
	50 mm	5 mm	125 mm
	2 inch	1/4 inch	5 inch
ORDERING Info.	200968	Buffer Solutions 10 each 20 ml Sachets pH 4.01, 7.01, 10.01	



G202L

Electronic High Temperature Thermometer

For accurate measurement of superheated surfaces, gases and liquids. Waterproof, K-type thermometer offering accurate temperature measurements in a wide range as well as a 1600 hours of battery life. LCD display with max/min temperature memory, hold facility and switchable °C/°F readout. The CLEAR button restarts the evaluation of high and low values. Equipped with BEPS (Battery Error Prevention System) which alerts the user in the event that low battery power could adversely affect readings. A wide variety of interchangeable probes are available to meet your specific needs. Optional rubber boots are available. Supplied with batteries, protective case and instructions.



WEIGHT	0.24 kg	0.53 lb		
DIMENSIONS	Width	Depth	Height	
	150 mm	80 mm	36 mm	
	5.9 inch	3.1 inch	1.4 inch	
ORDERING Info.	300119	Electronic High Temperature Thermometer		

G203B

Precision Mechanical Torsion Balance

250° scale x 500 divisions. Ranges from 0-5 mg x 0.01 mg to 0-1000 mg x 2.0 mg. Also available scaled 0-500 denier for yarns (90mm sample). Complete with pan, hook and draught excluder.



WEIGHT	3.9 kg	9 lb		
DIMENSIONS	Width	Depth	Height	
	320 mm	240 mm	410 mm	
	13 inch	10 inch	16.5 inch	
ORDERING Info.	300123	Torsion Balance 0-5 mg x 0.01 mg		
	G203B10	Torsion Balance 0-10 mg x 0.02 mg		
	300124	Torsion Balance 0-50 mg x 0.1 mg		
	G203B100	Torsion Balance 0-100 mg x 0.2 mg		
	G203B500	Torsion Balance 0-500 mg x 1.00 mg		
	G203B1000	Torsion Balance 0-1000 mg x 2.0 mg		

G204A-LB

Explorer Electronic Balances

Explorer Electronic Analytical and Top Pan Balances. Sealed housing, auto calibration, RS232 interface, programmable readout mode, liquid crystal display.

200870	100/210 gm x 0.0001/0.001 gm, 9cm dia pan
300136	210 gm x 0.001 gm, 12cm dia pan
202521	410 gm x 0.001 gm, 12cm dia pan
300139	610 gm x 0.01 gm, 17 x 17cm pan
300141	2100 gm x 0.01 gm, 17 x 17cm pan
300142	4100 gm x 0.01 gm, 17 x 17cm pan
300145	6100 gm x 0.1 gm, 20 x 20cm pan
300146	8100 gm x 0.1 gm, 20 x 20cm pan

WEIGHT	7 kg	15 lb	
DIMENSIONS	Width	Depth	Height
	210 mm	330 mm	370 mm
	8 inch	13 inch	14.5 inch
ORDERING Info.	As above		

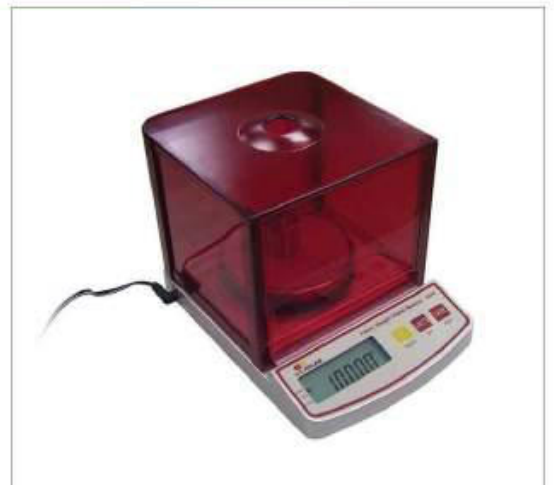


G204

Portable Electronic Balance

150g x 0.01g - Portability with precision. Large LCD display, AC adapter or battery operation, tactile switching, net wt and stability indication, auto shutoff, 100mm dia. SS pan, auto calibration, includes calibration weight, programmed for grams/sq meter and ounces/sq yard.

WEIGHT	1 kg	2.2 lb	
DIMENSIONS	Width	Depth	Height
	145 mm	210 mm	170 mm
	6 inch	8 inch	7 inch
ORDERING Info.	G204	150g x 0.01g.	



G204/1A-4A

Adventurer Electronic Balances

The economical way to weigh with precision. Large LCD display, large stainless steel pan, easy 3-button operation, sealed front panel and spill ring. Stability indicator, draft shield on 210g + 310g models. RS232 bi-directional interface is included.

300128	210gm X 0.001gm 120mm diameter pan
300130	310gm X 0.001 gm 120mm diameter pan
300131	610gm X 0.01 gm 149mm X 162mm pan
300132	1500gm X 0.01 gm 168mm X 180mm pan
300133	3100gm X 0.01 gm 168mm X 180mm pan
300134	4100gm X 0.01 gm 168mm X 180mm pan

WEIGHT	6 kg	13 lb	
DIMENSIONS	Width	Depth	Height
	217 mm	340 mm	110 mm
	8.5 inch	13.5 inch	4.3 inch



ORDERING INFORMATION

As above

G205

Wet and Dry Bulb Hygrometer

To determine temperature and relative humidity. Wall mounting with relative humidity slide rule, -20° to $+55^{\circ}\text{C}$.

WEIGHT	0.8 kg	1.8 lb	
DIMENSIONS	Width	Depth	Height
	140 mm	50 mm	380 mm
	6 inch	2 inch	15 inch

STANDARDS ERT 60-1

ORDERING Info. 300149 Wet and Dry Bulb Hygrometer



G206

Electronic Thermohygrograph

To determine and chart temperature and relative humidity over a selected period. Dual chart switchable 1 day or 7 days with quartz clock, drive charts and pens, measuring range -15 to $+40^{\circ}\text{C}$ for temperature, 0 to 100% RH.

WEIGHT	3 kg	7 lb	
DIMENSIONS	Width	Depth	Height
	336 mm	148 mm	295 mm
	13.4 inch	5.9 inch	11.8 inch

STANDARDS ERT 60-1

ORDERING Info. 201696 Electronic Thermohygrograph
201697 Charts 1 or 7 days (Pack of 50)
202726 Felt Tip Pens (Pack of 4)



G206D

Electronic Temperature and Humidity Recorder

A more accurate and sophisticated recorder than G206. Air is drawn over the sensing elements by an electrically driven fan. The mechanism allows a rapid reaction transfer to the circular chart of small changes in temperature and humidity. 7 day charts (100 supplied), electronic clock, and pens. 0-40°C, 20-100% RH.

WEIGHT	10 kg	22 lb	
DIMENSIONS	Width	Depth	Height
	370 mm	170 mm	360 mm
	15 inch	6.5 inch	14.5 inch
STANDARDS	ERT 60-1	M&S PG	
ORDERING Info.	300156	Electronic Temperature & Humidity Recorder	
	202591	Charts 7 Day (Pack of 100)	
	300161	Felt Tip Pens Red (Pack of 3)	
	202921	Felt Tip Pens Green (Pack of 3)	



G207

Whirling Hygrometer

To determine relative humidity and temperature. With relative humidity tables -5°C to +50°C.

WEIGHT	0.3 kg	0.7 lb	
DIMENSIONS	Width	Depth	Height
	230 mm	30 mm	145 mm
	9 inch	1.2 inch	6 inch
STANDARDS	ERT 60-1		
ORDERING Info.	G207	Whirling Hygrometer	



G207A

Digital Relative Humidity & Temperature Meter

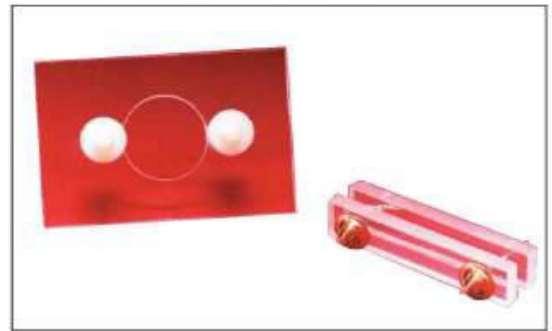
Battery operated 0-60°C x 1%, 15-90% RH x 2%, liquid crystal display, fitted case. Optional calibration kit available.

WEIGHT	0.3 kg	0.7 lb	
DIMENSIONS (In Case)	Width	Depth	Height
	200 mm	200 mm	75 mm
	8 inch	8 inch	3 inch
STANDARDS	ERT 60-1		
ORDERING Info.	300162	Digital Relative Humidity & Temperature Meter	
	300165	Calibration Kit	



G208**Microscopy Yarn & Fabric Holder Set**

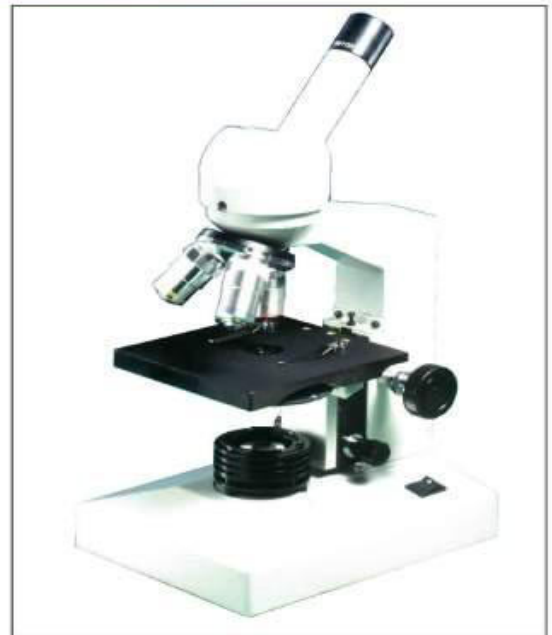
A set of two clear acrylic holders to mount yarn or fabrics for microscopic viewing. The fabric holder can be used to look at a cut or folded edge.



WEIGHT	200 g	0.4 lb	
DIMENSIONS	Width	Depth	Height
	75 mm	50 mm	25 mm
	3 inch	2 inch	1 inch
ORDERING Info.	300167	Microscopy Yarn and Fabric Holder Set	

G208A**Precision Monocular Microscope**

For the examination of textiles up to 400 times magnification. Eye pieces 10x, objectives 4x, 10x, 40x, substage illumination, 360° rotatable head, coarse and fine focusing.



WEIGHT	4 kg	8.8 lb	
DIMENSIONS	Width	Depth	Height
	220 mm	300 mm	420 mm
	9 inch	12 inch	17 inch
ORDERING Info.	300168	Precision Monocular Microscope	

G208B**Precision Trinocular Microscope**

For the examination of textiles up to 1000 times magnification. Eyepieces 10x, objectives 4x, 10x, 40x, 100x, substage illumination 360° rotatable head, coarse and fine focusing. Large mechanical stage with built-in X-Y verniers. Extra viewing port to cameras, video or standard.



WEIGHT	4 kg	8.8 lb	
DIMENSIONS	Width	Depth	Height
	220 mm	300 mm	420 mm
	9 inch	12 inch	17 inch
ORDERING Info.	300169	Precision Trinocular Microscope	

The precise graduation of the low position coaxial control mechanical stage allows quick finding and marking of specific areas on your slide. The travel range of the stage is 76mm x 50mm (X-Y) and graduated to 1 mm with vernier reading to 0.1 mm.

Slide-in centerable Abbe Condenser N.A. 1.25 offers maximal flexibility required for any laboratory application.

The built in field of view diaphragm ensures correct positioning of the condenser according to Köhler for perfect illumination of the specimens.

Siedentopf trinocular phototube 30° inclined. The vertical tube has a built in 1/3" CCD camera.

The ball bearing mounted reversed quintuple nosepiece has a ribbed grip for easy rotation and is positioned back closer to the microscope body for easy access to the specimen.

The ASC "Achromatic Super Contrast" objectives provide brilliant sharp images with excellent contrast.

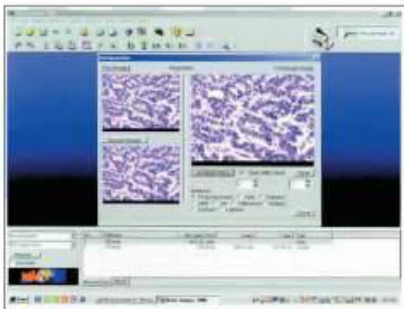
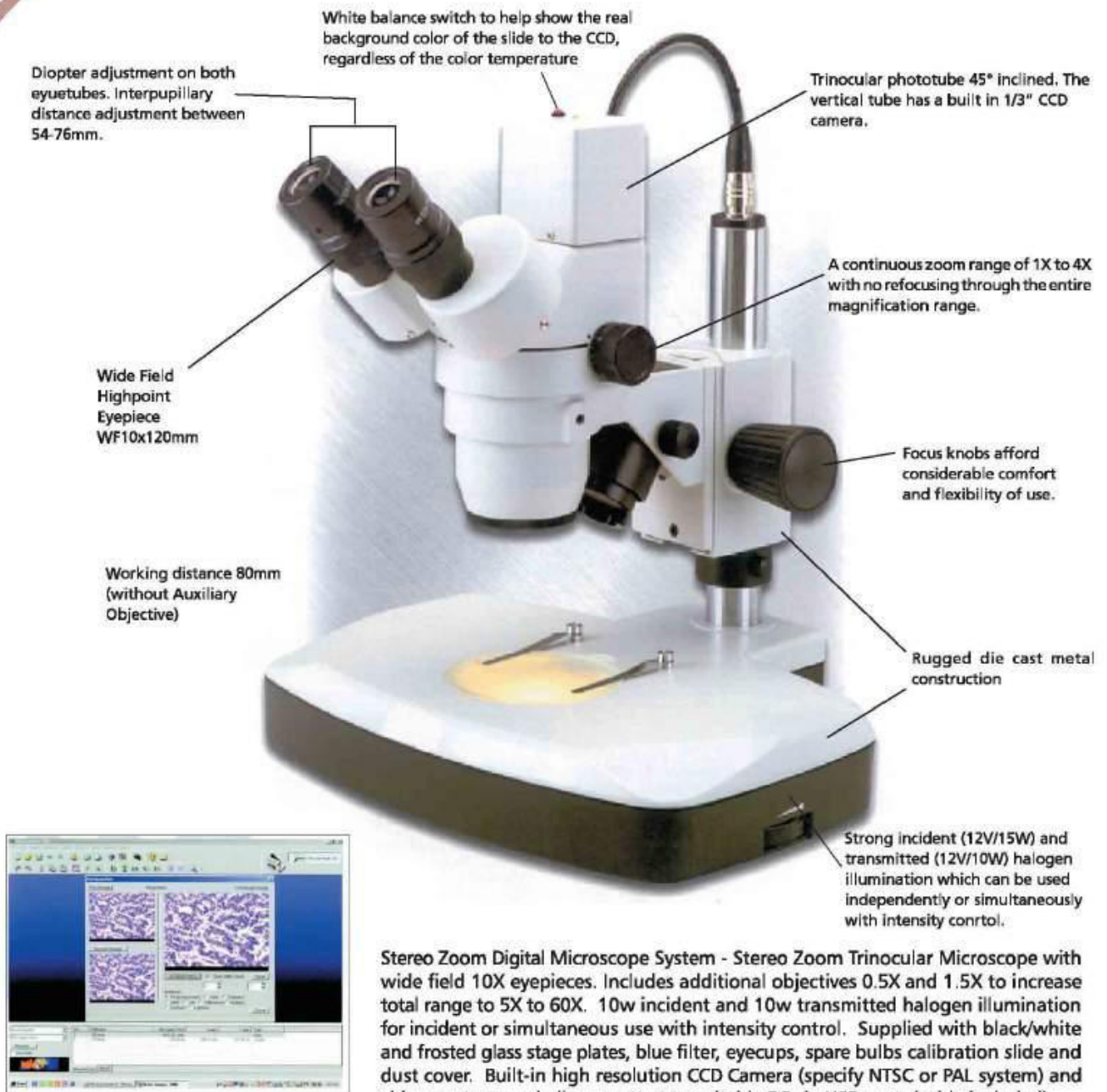
A bright and efficient 12v/20W halogen illumination with intensity control allows viewing of difficult light absorbing specimens.

White balance switch to help show the real background color of the slide to the CCD, regardless of the color temperature

Compound Digital Microscope System-Precision Trinocular Microscope with wide field 10X eyepieces and achromatic super contrast objectives for total magnification of 40X,100X , 400X and 1000X. Precision mechanical stage, 20W halogen illumination with intensity control, white balance switch with supplied with blue, green, yellow and frosted filters, eyecups, spare bulb, calibration slide and dust cover. Built-in high resolution CCD Camera (specify NTSC or PAL system) and video capture card allows output to suitable PC via USB port (cable included). Includes powerful image analysis software capable of capturing images, on-screen measurement, storage and retrieval. Minimum computer requirements 500MHZ,64MB Ram,200MB hard drive space, Windows 98, SVGA color, CD Rom,USB port.



ORDERING Info. 200768 - Compound Digital Microscope System
 300172 - As G208B1,add Polarising Set fitted and calibrated
 300170 - 20 watt, spare bulb
 300183 - Optional Advanced Software V3.2



Stereo Zoom Digital Microscope System - Stereo Zoom Trinocular Microscope with wide field 10X eyepieces. Includes additional objectives 0.5X and 1.5X to increase total range to 5X to 60X. 10w incident and 10w transmitted halogen illumination for incident or simultaneous use with intensity control. Supplied with black/white and frosted glass stage plates, blue filter, eyecups, spare bulbs calibration slide and dust cover. Built-in high resolution CCD Camera (specify NTSC or PAL system) and video capture card allows output to suitable PC via USB port. (cable included). Includes powerful image analysis software capable of capturing images, on-screen measurement, storage and retrieval. Minimum computer requirements 500MHZ, 64MB Ram, 200MB hard drive space, Windows 98, SVGA color, CD Rom, USB port.

ORDERING Info. 300176 -Stereo Zoom Digital Microscope System
300177 -10 watt spare bulb
300183 - Optioneal Advanced Software V3.2

G208E

Portable Microscope

30x magnification, battery operated.

WEIGHT	70 g	0.15 lb	
DIMENSIONS	Width	Depth	Height
	50 mm	22 mm	140 mm
	2 inch	0.9 inch	5.5 inch
ORDERING Info.	300173	Portable Microscope	



G208F/F1

Stereo Zoom Microscope

For the examination of textiles with large viewing area, 7 - 45 times magnification with stepless adjustment. Eyepieces 10X, zoom lens 0.7 - 4.5X, complete with incident and transmitted light illuminators, 360° rotatable head with extra viewing port for cameras, video or standard.

WEIGHT	4 kg	8.8 lb	
DIMENSIONS	Width	Depth	Height
	220 mm	300 mm	420 mm
	9 inch	12 inch	17 inch
ORDERING Info.	300174	Stereo Zoom Microscope with Trinocular Head	
	300175	2 x eye piece	



G208G

Stereo Microscope

For the examination of textiles with large viewing area, 10 to 40 times magnification. Eyepieces 10x, objective 2, 4x, complete with incident and transmitted light illuminators, 360° rotatable head.

WEIGHT	4 kg	8.8 lb	
DIMENSIONS	Width	Depth	Height
	220 mm	300 mm	420 mm
	9 inch	12 inch	17 inch
ORDERING Info.	300180	Stereo Microscope	



G209A/B

Combined Laboratory Ovens & Incubators

Dual purpose for both perspiration and oven-dry tests with high accuracy. 30 liters or 120 liters capacity. Dual temperature ranges and scales (25-110°C ± 0.25°C 50-250°C ± 0.75°C) stainless steel interior .Circulation fan and door thermometer, 2 shelves. Other sizes, temperature ranges and accuracies available on request.

	WEIGHT		30 Litres		20 kg		44 lb	
	DIMENSIONS		120 Litres		45 kg		99 lb	
30 Litres	Width		Depth		Height			
		Ext	Int	Ext	Int	Ext	Int	
	420mm	310mm	430mm	300mm	580mm	350mm		
	17inch	12.4inch	17.5inch	12inch	23inch	14inch		
120 Litres	600mm	480mm	580mm	460mm	810mm	550mm		
	24inch	19inch	23inch	18.5inch	32.5inch	22inch		
ORDERING Info.	G209A	Combined Laboratory Oven and Incubator, 30 Liters						
	G209B	Combined Laboratory Oven and Incubator, 120 Liters						



G210L

Lightmeter

The Lightmeter Model CA813 is a portable, easy-to-use instrument which features optical sensors that are designed to match the response of the human eye, making them ideal instruments for workspace analysis and planning. The ergonomically designed case, large display and intuitive function selection make this instrument the right choice for any application.

The Lightmeter Model CA 813 is designed for simple one-hand operation. It provides selectable lux or foot-candle units for display and features a 3 1/2 digit backlit LCD and HOLD function. The Model CA 813 offers a PEAK function.

	WEIGHT		200 g		0.4 lb			
	DIMENSIONS		Width		Depth		Height	
	100 mm	25 mm			150 mm			
	4 inch	1 inch			6 inch			
ORDERING Info.	G210L	Lightmeter						



Cost saving alternative for your Assessment Cabinet requirements.

COLORCHEX 60 / 120 COLOR ASESMENT CABINET - New highspecification/ low cost option to conventional light booths. With Illuminant A and Horizon sunlight as standard, 3 other fluorescent light sources can also be specified including D65 (CRI 98), TL84/P15 and UV. Light booths comply with BS 950 Part 1 and 16 CIES.X0.12.

Preset with programmable-sequence lighting and individual lighting life record function. Optional selection for remote control function of light source selection.

FUNCTIONAL FEATURES:

- Pre-heat time setting (10 seconds) for fluorescent
- With usage record (by on / off) for individual fluorescent
- With individual lighting life record function and over-time alarm
- With programmable-sequence lighting function
- Interlocking function for three light sources: D65, TL84/P15 and UV
- With optional light sources (change the name on display panel through program setting)
- Remote control of light source selection (Optional)

SWITCH CODE	Lamp Options	
D65	Artificial Daylight D65	Correlated color temperature is 6500K. Within the tolerances prescribed in BS 950: Part 1, Illuminant for color matching appraisal. Specified for most applications where there is a need to maintain color consistency and quality. Conforming highly to the CIE specifications, for accurate color matching.
TL84/P15	Narrow-band Fluorescent	Narrow Band Triphosphor Fluorescent Lamps. Correlated color temperature of 4000K. Used as an European Point of Sales Illuminant.
A	Illuminant 'A' (Inc A)	Correlated color temperature 2856K. Required by BS 950: Part 1 as a test for metamerism (CIE Illuminant 'A'). Used to check for color flaring. This is particularly important for those shades containing red and yellow coloring matters.
H	Horizon Daylight (HOR)	Home lighting with correlated color temperature is 2300K.
UV	Ultra-Violet Blacklight (UV)	Used to detect the presence of Optical brightening Agents and/or Fluorescent dyes. Therefore it is useful when assessing white and Fluorescent shades to check the level present and its evenness.



G210-60 Color Assessment Cabinet



G210-120 Color Assessment Cabinet

WEIGHT

ColorChex 60	30 kg	66 lb
ColorChex 120	78 kg	171.6 lb

DIMENSIONS Width Depth Height

	Width	Depth	Height
ColorChex 60			
Overall	710 mm 28.0 inch	410 mm 16.0 inch	565 mm 22.0 inch
Viewing Cavity	710 mm 28.0 inch	360 mm 14.0 inch	380 mm 15.0 inch
ColorChex 120			
Overall	1300 mm 51.0 inch	630 mm 25.0 inch	810 mm 32.0 inch
Viewing Cavity	1260 mm 50.0 inch	570 mm 22.0 inch	590 mm 23.0 inch

STANDARDS	BS 950 Part 1	DIN
ANSI	16 CIES.X0.12	ASTM D1729

H&M shop lighting TL83 available on request

Next Color Assessment

ORDERING INFORMATION

G210/45	45 Degree Fixed Aegle Table for ColorChex Assessment Cabinet
G210/60	ColorChex 60 Color Assessment Cabinet
G210/120	ColorChex 120 Color Assessment Cabinet

For the visual assessment of color under controlled, standard light conditions. Cabinets incorporate a digital control panel, which includes features such as auto sequence, servicing indicator, warm up, power save, data recording and optional dimming. The new look control panel, is also ergonomically designed to allow the user more comfort. Illuminants can be chosen as follows:

- D65 VeriVide "Artificial Daylight" fluorescent lamps conforming to Standard Illuminant D6500.
- D652 Additional level of "Artificial Daylight" for colors of low reflectance factor.
- TL83 & 84 Philips Triphosphor fluorescent lamps. Often chosen as a "Point of Sale" illuminant.
- F Filament (domestic) lighting and as a test for metamerism.
- UV Ultra Violet light to reveal the presence of fluorescent dyes and bleaches.

WEIGHT	kg	lb
CAC 60	25	55
CAC60-5	25	55
CAC120	50	110
CAC150	55	122
Portable	10	22

STANDARDS BS 950 DIN 6173

M&S C1,C2 (CAC 60+150)

Next Color Assessment

ORDERING INFORMATION

- G210A Verivide Color Assessment Cabinet CAC 60
- G210A5 Verivide Color Assessment Cabinet CAC60-5
- G210B Verivide Color Assessment Cabinet CAC120
- G210B5 Verivide Color Assessment Cabinet CAC120-5
- G210C Verivide Color Assessment Cabinet CAC150
- G210C5 Verivide Color Assessment Cabinet CAC150-5
- G210D Verivide Color Assessment Cabinet Portable
- G210J 45° Degree Fixed Angle for Verivide Color Assessment Cabinets
- 300215 Spare Lamps CAC 60 (1 Set)
- 300216 Spare Lamps CAC60-5 (1 Set)
- 300218 Spare Lamps CAC120 (1 Set)
- 300219 Spare Lamps CAC120-5 (1 Set)
- 300220 Spare Lamps CAC150 (1 Set)
- G210G5 Spare Lamps CAC150-5 (1 Set)
- 300223 Spare Lamps Portable (1 Set)

DIMENSIONS		Width		Depth		Height	
		mm	inch	mm	inch	mm	inch
CAC60	Overall	710	28.5	420	17	545	22
	Viewing Cavity	680	27	380	15	335	13
CAC60-5	Overall	710	28.5	520	21	545	22
	Viewing Cavity	680	27	500	20	335	13
CAC120 & CAC120-5	Overall	1300	52	620	25	755	30
	Viewing Cavity	1260	50	590	23.5	545	22
CAC150 & CAC150-5	Overall	1560	62.5	620	25	755	30
	Viewing Cavity	1520	61	590	23.5	545	22
Portable	Overall	680	27	330	13	365	14.5
	Viewing Cavity	635	25	285	11	260	10
	Closed	670	26.5	110	4.5	305	12



G210N7

ColorChex Color Assessment Cabinet

Cost saving alternative for your Assessment Cabinet requirements. The ColorChex N7 creates the perfect alternative to natural daylight. It allows colour assessment to be carried out in accordance with Standards ASTM D1729, BS 950 Part 1, DIN and ANSI.

The ColorChex N7 incorporates "Illuminant A", in accordance with CIE standards and Horizon light sources. It has been designed to meet the needs of the American market with American retailers and manufacturers often specifying Horizon light. The ColorChex N7 contains five light sources that can include a selection of CIE illuminants, Point of sale illuminants, UV, Illuminant A and Horizon.

The unit has a new design feature eliminating the need for screws when assembling the cabinet. The unit slots together, making it easier to assemble, and making it suitable for transporting if required. Other features include a built in time elapsed meter for scheduling the replacement of individual lamps, membrane switching with electronic ballasts, and a specially selected white reflector.



STANDARDS	DIN 6173	BS 950 Part 1	ANSI
	ASTM D1729		
WEIGHT	25 kg	55 lb	
DIMENSIONS	Width	Depth	Height
	660 mm 26 inch	315 mm 12.6 inch	456 mm 18 inch
ORDERING Info.	G210N7	ColorChex N7 Assessment Cabinet	

G210VB

VeriVide Viewing Board

For the evaluation of smoothness in appearance of flat fabric and seams, and the retention of pressed creases.

Evaluation is performed using a standard lighting and viewing area by rating the appearance of specimens in comparison with appropriate reference standards. Lighting and evaluation should be carried out in a darkened room, using the equipment light source only. Any ambient light reflected could interfere with the rating results.

Viewing board incorporates either 2400mm (8ft) or 1200mm (4ft) Cool White lamps. The unit is switched and incorporates high frequency electronic control gear and can be either wall or mobile trolley mounted. May be built to customer specifications.



WEIGHT	62 kg	136.4 lb	
DIMENSIONS	Width	Depth	Height
	1830 mm 73.2 inch	270 mm 10.8 inch	1830 mm 73.2 inch
ORDERING Info.	G210VB	VeriVide Viewing Board	
	201035	Suitable for AATCC Test Methods using 4 foot lamps	
	201036	Suitable for AATCC Test Methods using 8 foot lamps	
	203077	Mobile stand for VeriVide Viewing Board	



Fashion and home professionals worldwide recognize the PANTONE Textile Color System as the global communication tool for color specification. Today, hundreds of thousands of designers, product managers, merchandisers and quality control professionals rely on Pantone to ensure that their color selections for product development are communicated accurately.

PANTONE Textile Color Systems. Communicate color choices with ease and efficiency. Quickly pinpoint shades within each color group with over 1900 shades to choose from arranged chromatically

Color Swatch Files. The ultimate creative tool for those who need immediate access to over 1,900 textile color swatches. Three-volume set contains all colors in a 2" x 2" removable swatch format. Each binder houses a range of color, from neutrals through warm and cool colors. Designers can create solid color palettes and combine for yarn dye and print combinations.

Color Selector – Cotton. Compact reference book contains over 1,900 textile colors dyed on 100% cotton chips. This easy desktop reference is the ideal color locator for those who need to make quick color decisions.

Textile Color Swatch Card – Cotton. Individual 4" x 4" cotton swatch cards available in all colors provide the most accurate way for designers to specify their color choices. Each card is identified with the PANTONE Textile Number and name and can be cut into smaller pieces to send to multiple production locations.

Color Specifier – Paper. New specifier book features six larger-sized, tear-out chips for each color, all in a single volume. Larger format provides greater visualization, ideal for attaching to design sketches.

Color Guide. New larger-sized portable color-on-paper fan deck contains over 1,900 textile colors chromatically arranged for optimum viewing. Easy to bring along for sample shopping, client or vendor meetings and on-site reviews.

Color chooser Kit. Now designers and stylists can have digital access to the updated version of the PANTONE Textile Color System. Their color preferences can be incorporated into most design software, with new support for Adobe® Illustrator®. Optimized sRGB and HTML values enable improved visualization on screen. For Macintosh OS X and Microsoft Windows 98, 2000, ME and XP.

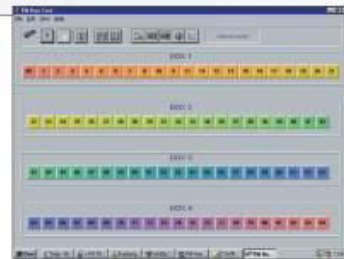
Color Cue TX. Capture your color inspiration in the palm of your hand. Our new colorimeter lets you click on any colored material and cross match it to the closest PANTONE Textile Color.

ORDERING Info.		
200265	Color Selector - Cotton	
203523	Color Swatch Files - Cotton	
203524	Textile Color Swatch Card - Cotton	
200216	Color Specifier - Paper	
200217	Color Guide	
G210P/5	Color Chooser Kit	
203525	Color Cue TX	

G210M

Farnsworth-Munsell 100 Hue Test Kit

For determination of color vision anomalies and color aptitude. An essential test for technologists and assessors in color and color difference. Consists of four trays, each containing a segment of 85 color reference disks mounted in recessed area of individual black plastic caps. Color vision anomalies and color aptitude are detected by the ability of testee to place color caps in hue order. Included software provides numerical and graphical results. Color reference size is 1/16" (12mm) diameter. Furnished with instruction manual. Complete in fitted wooden case.



WEIGHT	5 kg	11 lb	
DIMENSIONS (In Case)	Width	Depth	Height
	550 mm	150 mm	75 mm
	22 inch	6 inch	3 inch

ORDERING Info. 201941 Farnsworth-Munsell 100 Hue Test Kit

G210N

Ishihara Color Blindness Test Charts Kit

A general and more rapid test for workers in textiles and other color-dependant industries. 38-plate version bound into book form, with instructions.



WEIGHT	200 g	0.4 lb	
DIMENSIONS	Width	Depth	Height
	100 mm	25 mm	150 mm
	4 inch	1 inch	6 inch

ORDERING Info. 200994 Ishihara Color Blindness Test Charts Kit

G211

Electronic Moisture Meter

Determine the residual moisture of yarn bobbins, fabric rolls, cotton bales, fiber flocks etc., as well as to measure room temperature and humidity RH % . Microprocessor controlled with storage of moisture scales for a big variety of textiles. Digital display for direct moisture percentage reading of 7 materials (wool, rayon, cotton, linen, nylon, acrylic, polyester) and 10 often used material mixtures. Scale with 0 - 100 for non stored materials; with the help of supplies comparison tables the moisture of additional 23 materials can be determined. Instrument with leather carrying case and battery, 1 connecting cable, electrode holder, 2 electrodes, Manufacturers Test Report, 1 operating instruction with comparison tables in english.

WEIGHT	0.9 kg	2.0 lb	
DIMENSIONS	Width	Depth	Height
	170 mm	250 mm	60 mm
	6.8 inch	10 inch	2.6 inch

ORDERING Info. 203624 Electronic Moisture Meter
203729 Calibration Kit



Similar to models G212, but built in USA for sale throughout North, Central and South America to facilitate installation and after-sales service. Textile testing laboratories require "Close control" of temperature and humidity worldwide. This specially designed system ensures compliance with international standards. Two systems available to suit room volumes to 280cubic metres (9000cu.ft). Custom built units available for larger volume rooms. Digital display of temperature and humidity to control area at 20°C (70°F) ± 2° and 65% RH ± 2% (or other conditions as required). Installation is not included, may be required. For final offer and recommendations, complete questionnaire.



STANDARDS	ISO 139/187	BS EN 20139/20187	DIN 50015
	ERT 60-1	ASTM D1776	M&S PGA
WEIGHT	318 kg	700 lb	
DIMENSIONS	Width	Depth	Height
	800 mm	800 mm	2375 mm
	32 inch	32 inch	94 inch
ORDERING Info.	G212A1	Laboratory Air Conditioning Package System 9.6KW	
	G212B1	Laboratory Air Conditioning Package System 15KW	
	G212C1	1 year consumables and spares package (G212A1/B1)	

Please complete questionnaire on page 137

For the conditioning of samples prior to testing, provides conditions from 20% to 98% RH \pm 2 and 0°C to 94°C \pm 0.5°C.

Three capacities available:

1.5cu.ft/42litres, Internal	Height 325mm 13 inch	Width 350mm 14 inch	Depth 325mm 13 inch
5.8cu.ft/165litres, Internal	Height 600mm 24 inch	Width 500mm 20 inch	Depth 450mm 18 inch
10cu.ft/280litres, Internal	Height 750mm 30 inch	Width 600mm 24 inch	Depth 600mm 24 inch

Provided with:

Manual Digital Set - Digital Indicating Controller for temperature and humidity. Stainless steel shelf - 2 positions. Forced air circulation. 2 inch access port and plug on left wall. Self contained heating, refrigeration and steam generator humidifier. Vapour - tight welded stainless steel interior.

Optional Extras:

2 - channel automatic programmer with ramp and soak facilities.

Self contained recirculating humidity system with 6 gallon (24 litre) reservoir-(obviates need for piped de-ionised or de-mineralised water). Extra stainless steel shelf.

Note:

Custom-designed and built chambers of any required capacity up to room size, with conditions down to -20°C are available, quotations on request.

Model D1

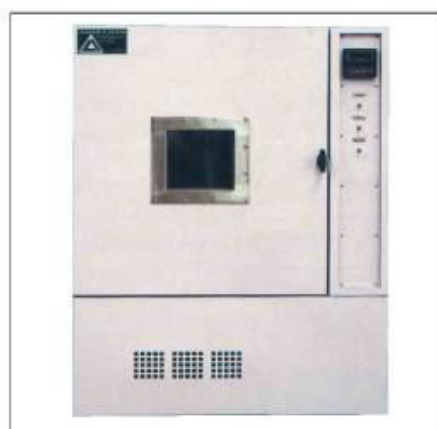
WEIGHT	80 kg	175 lb	
DIMENSIONS	Width 675 mm 27 inch	Depth 650 mm 26 inch	Height 825 mm 33 inch

Model D2

WEIGHT	114 kg	250 lb	
DIMENSIONS	Width 825 mm 33 inch	Depth 775 mm 31 inch	Height 1150 mm 46 inch

Model D3

WEIGHT	125 kg	275 lb	
DIMENSIONS	Width 900 mm 36 inch	Depth 925 mm 37 inch	Height 1300 mm 52 inch



ORDERING INFORMATION

- 300254 Laboratory Conditioning Chamber 1.5cu. ft/42litres
- 300255 Laboratory Conditioning Chamber 5.8cu. ft/165litres
- 202853 Laboratory Conditioning Chamber 10cu. ft/280litres
- 401860 2 Channel Automatic Programmer
- 202854 Recirculating Humidity System
- 202855 Extra Stainless Steel Shelf

Laboratory Air Conditioning Unit — QUESTIONNAIRE

PHOTOCOPY
& FAX BACK
TO SDL Atlas

1 Company Name
 Address
 For the attention of Position

2 Description of Room Usage

Room Size Length Width Height

Walls Construction Thickness

Floor Construction Thickness

Ceiling Construction Thickness

Doors No Type Size

Windows No Type Size

What are adjoining rooms?

Are they heated? Or conditioned? At what temperature?

3 Internal conditions required:
 Temperature °C Tolerance +/- °C Relative Humidity Tolerance +/- %

4 External Conditions:
 Summer Mean Max. Temp. Dry Bulb °C at % RH. Wet Bulb °C
 Winter Mean Min. Temp. Dry Bulb °C at % RH. Wet Bulb °C

5 Installed Equipment:
 Motors: No Total Power KW Load Factor %
 Simultaneous Operation

Lighting: Power watt Simultaneous Operation

Other Equipment: Specify all other heat sources and power (watt):

6 Number of Persons Number of Shifts Working Hours

7 Services Available: Electrical Power: 3 Phase A.C. Volts Hz
 Controls: 1 Phase A.C. Volts Hz
 Water Type: Well? River? Town Main? Treated?
 Quantity Litres/Hr Maximum Temp °C
 Chemical Analysis Hardness

8 Notes: Give any other relevant details including building plan, equipment layout etc.

G212F

Conditioning Shelving Unit For Laboratory

Allows samples to gradually absorb laboratory conditions prior to testing. Consists of 4 heavy duty mesh shelves coated in white nylon, and 4 post supports with adjustable shelf locking devices chromium-plated steel.



WEIGHT	37 kg	82 lb	
DIMENSIONS	Width	Depth	Height
	1200 mm	600 mm	1525 mm
	48 inch	24 inch	60 inch
ORDERING Info.	303549	Conditioning Shelving Unit	

G246A

AATCC/ISO Grey Scales

For assessment of change in color and staining in colorfastness testing 1-5 steps with half steps, in wallet.

WEIGHT	50 g		
DIMENSIONS	Width	Depth	
	80 mm	230 mm	
	3 inch	9 inch	
STANDARDS	BS 1006	ISO 105	AATCC procedure 1+2
ORDERING Info.	201195	ISO/BS Grey Scale (Change in color)	
	201194	ISO/BS Grey Scale (Staining)	
	202162	AATCC Grey Scale (Change in color)	
	202161	AATCC Grey Scale (Staining)	



G246C/CC

AATCC/ISO Light Fastness Standards

Blue wool fabric (pack of 8 graded 1-8) to meet ISO/SDC/BS standards. Dimensions each piece 240mm (9 1/2") x 150mm (6")

Light Fastness Standards. Blue wool fabric to AATCC Standards. Specify L2, L4 or L5

STANDARDS	BS 1006	ISO 105	AATCC 16
	M+S C9, C9A		
ORDERING Info.	300267	Light Fastness Standards ISO/BS (Pack of 1-8)	
	G246CC	Light Fastness Standards AATCC (Singles, Specify L2, L4 or L5)	



G246D

ISO Humidity Control Fabric B02

To meet ISO/SDC/BS standards. 1 piece 250mm (10") x 150mm (6")

STANDARDS

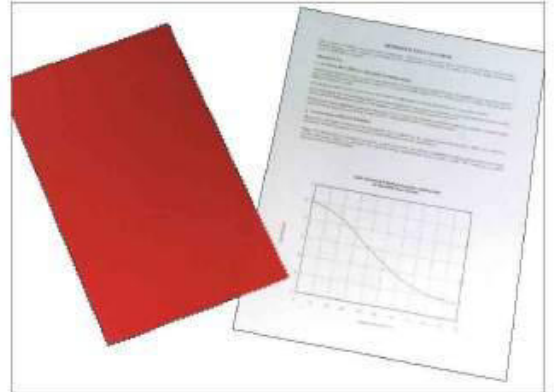
ISO 105

BS 1006

ORDERING Info.

201206

Humidity Control Fabric B02



G246E

Assessment and Grading Masking Sets

To mask non-relevant sample areas in color assessment tests.

STANDARDS

ISO 105

BS 1006

M+S C2

Next Color Assessment

ORDERING Info.

201192

Assessment and Grading Mask SDC

201078

Assessment and Grading Mask M & S

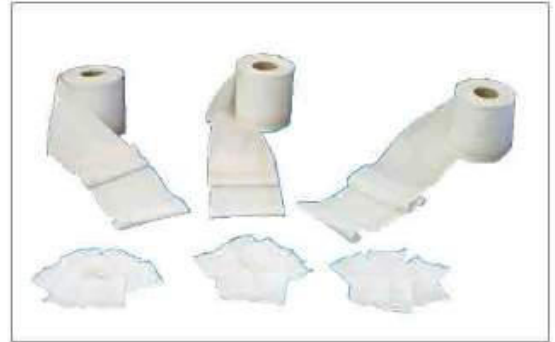


For assessing color transfer in color fastness testing. The fabrics are 100mm (4 inch) wide, with warp stripes of 6 fibres as below.

Available in 10 meter rolls or cold cut pieces with pinked edges (see ordering information).

G246F
 Diacetate
 Bleached Cotton
 Spun Polyamide Nylon 6.6
 Spun Polyester Dacron 54
 Spun Polyacrylic-Orlon 75
 Worsted Wool

200828
 Triacetate
 Bleached Cotton
 Spun Polyamide Nylon 6.6
 Spun Polyester Dacron 54
 Spun Polyacrylic-Orlon 75
 Spun Viscose



Multifiber Adjacent Fabrics Filling (Weft) Stripe, available in yards, meters or cut to various sizes with cold cut, heat sealed or overcast plain edges (see ordering information).
 Cold cut products are suitable for static colorfastness tests, heat sealed for low agitation tests and overcast for high agitation tests.

G246F10 - AATCC
 Filling stripes of the following with a 5cm (2") repeat. 45"width x 1Yard.
 Acetate
 Bleached Cotton
 Spun Nylon 6.6
 Spun Polyester (Dacron 54)
 Spun Acrylic (Orlon)
 Worsted Wool

G246F10A - ISO/M&S
 Filling stripes of the following with a 10cm (4") repeat. 45"width x 1Yard.
 Acetate
 Bleached Cotton
 Spun Nylon 6.6
 Spun Polyester (Dacron 54)
 Spun Acrylic (Orlon)
 Worsted Wool

G246F10B - AATCC
 Filling stripes of the following with a 5cm (2") repeat. 54"width x 1Yard.
 Acetate
 Bleached Cotton
 Spun Nylon 6.6
 Spun Silk
 Spun Rayon
 Worsted Wool

ORDERING INFORMATION

G246F	Multifiber 10A/TIC, warp stripe 10 mtrs
300286	Cut 4 x 10 cm, 1000 pieces
300287	Cut 5 x 10 cm, 1000 pieces
202327	Multifiber 10A/SDC, warp stripe, 10 mtrs
201190	Cut 4 x 10 cm, 250 pieces
G246F1/B	Cut 5 x 10 cm, 250 pieces
200828	Multifiber F10/TV, warp stripe 10 mtrs
300317	Cut 4 x 10 cm, 1000 pieces
300319	Cut 5 x 10 cm, 1000 pieces
300310	Multifiber FA10, filling stripe 1 yard
203064	Cold cut 2 x 2 inch, 1000 pieces
200882	Heat sealed 2 x 2 inch, 1000 pieces
300290	Overcast 2 x 2 inch, 1000 pieces
300292	Cold cut 2 x 4 inch, 1000 pieces
300294	Heat sealed 2 x 4 inch, 1000 pieces
300293	Overcast 2 x 4 inch, 1000 pieces
200881	Multifiber FAA10A, filling stripe 1 mtr
300298	Cold cut 4 x 10 cm, 1000 pieces
200879	Heat sealed 4 x 10 cm, 1000 pieces
300299	Overcast 4 x 10 cm, 1000 pieces
300300	Cold cut 5 x 10 cm, 1000 pieces
300302	Heat sealed 5 x 10 cm, 1000 pieces
300301	Overcast 5 x 10 cm, 1000 pieces
300309	Multifiber FB1, filling stripe 1 yard
300304	Cold cut 2 x 2 inch, 1000 pieces
200884	Heat sealed 2 x 2 inch, 1000 pieces
300305	Overcast 2 x 2 inch, 1000 pieces
300306	Cold cut 2 x 4 inch, 1000 pieces
300308	Heat sealed 2 x 4 inch, 1000 pieces
300307	Overcast 2 x 4 inch, 1000 pieces

STANDARDS

BS 1006

ISO 105

ASTM D204

AATCC 15, 61, 101, 106, 107

M+S C3, C4A, C5, C6, C7, C11

G246H

AATCC Chromatic Transfer Scale, Nine Step

To visually evaluate color transfer or staining, using 60 color chips over 5 hues (red, yellow, green, blue and purple).

STANDARDS AATCC Evaluation Procedure 8

ORDERING INFORMATION 202163 Chromatic Transfer Scale, Nine Step



G246J

AATCC Crease Appearance Replicas

Five plastic replicas representing crease appearance with five being the best and one being the least crease retention after laundering. With storage case.

WEIGHT (In Box) 200 g 0.45 lb

DIMENSIONS (In Box)	Width	Depth	Height
	380 mm 15 inch	90 mm 3.5 inch	400 mm 15.5 inch

STANDARDS AATCC 88C, 143 M+S P134

ORDERING Info. 202156 Crease Appearance Replicas



G246K

AATCC/ISO Smoothness Appearance Replicas

Six plastic replicas used to visually evaluate the smoothness of fabrics after laundering. With storage case.

WEIGHT (In Box) 2 kg 5 lb

DIMENSIONS (In Box)	Width	Depth	Height
	380 mm 15 inch	90 mm 3.5 inch	390 mm 15.5 inch

STANDARDS AATCC 124, 143 M+S P91, P134 ISO 7768

ORDERING Info. 202158 Smoothness Appearance Replicas



G246L

AATCC/ISO Seam Smoothness Photographs

Used to visually evaluate smoothness of seams after laundering.

DIMENSIONS	Width	Depth	Height
	380 mm	90 mm	390 mm
	15 inch	3.5 inch	15.5 inch
STANDARDS	AATCC 88B	M+S P134	ISO 7770
	JISL 1905		
ORDERING Info.	202157	Seam Smoothness Photographs (Set of 2)	

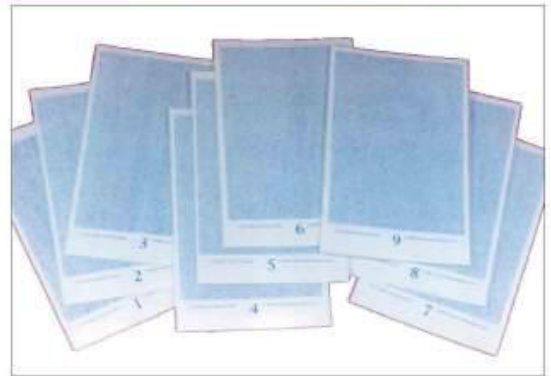


G246M

AATCC Barré Assessment Scales

For the visual assessment and grading of Barré, the optical result of physical or dye differences in yarns, geometric differences in fabric, or a combination of both.

WEIGHT	50 g	0.1 lb
DIMENSIONS	Width	Depth
	220 mm	355 mm
	9 inch	14 inch
STANDARDS	AATCC 178	
ORDERING Info.	G246M	Barré Assessment Scales (Set 1-9)



G246N

Fluorescence Suppressor

When a sample is observed to have lost color or have changed color during washing, this may be due to the effect of washing or the effect of the presence of optical brightener on the sample. This can be assessed using the fluorescence suppressor.

Both the tested and untested samples are placed side by side. The fluorescence suppressor is then placed over the 2 samples. If the observed difference is not present when viewed through the fluorescence suppressor, the change in shade or color loss is due to the effect of optical brightener.

WEIGHT	350 g	0.65 lb	
DIMENSIONS	Width	Depth	Height
	120 mm	110 mm	10 mm
	5 inch	4 inch	0.4 inch
STANDARDS	M+S P5		
ORDERING Info.	201196	Fluorescence Suppressor	



G246P

ISO Standard Depth Scales

As the fastness of dyeing depends on the depth of colour it is necessary to specify standard depths when making comparisons. Dye manufacturers pattern cards refer to these depths in fastness ratings for their products.

SDC standard depths are illustrated in a range of 6 steps each from 2/1 to 1/25 depth over a range of 18 hues plus 2 navies and 2 blacks.



STANDARDS ISO 105/A01 BS 1006/A01 AATCC procedure 4

ORDERING Info. 201193 Standard Depth Scales SDC/BS/ISO (Set)

G246Q

AATCC Stain Release Replicas

For evaluating fabrics tested to method TM 130 for oily soil release during home laundering.

STANDARDS AATCC 130

ORDERING Info. 202155 AATCC Stain Release Replicas



G250

Fluorescent Illuminated Magnifier

Fitted with circular fluorescent lamp, spring loaded positioning arm and table clamp. Standard lens power 3 diopters.

WEIGHT	3.2 g	7 lb	
DIMENSIONS	Width	Depth	Height
	560 mm	230 mm	120 mm
	22 inch	9 inch	5 inch

ORDERING Info. 200993 Fluorescent Illuminated Magnifier
300339 Spare Lamp



SDL are suppliers of all recognised test methods and standards in original copyright form. Recommended lists of standards for textiles for any particular application are available on request. Ask for a quotation on any world standard, advising standard number, year and title.

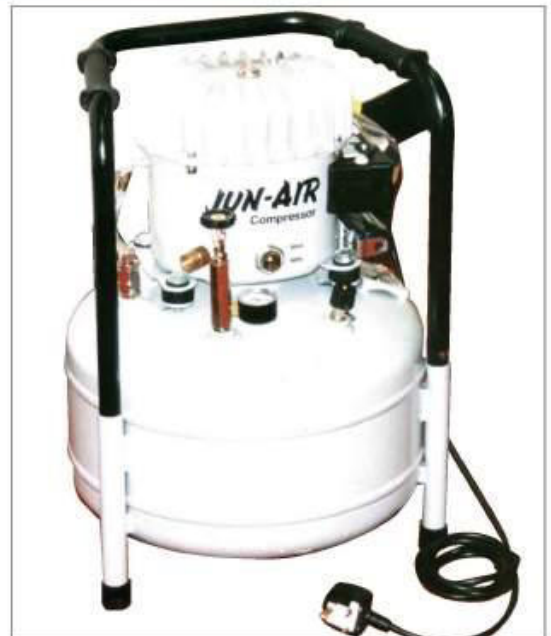
ORDERING INFORMATION

G253	EDANA Recommended Test Methods For Nonwovens (Bound Set)
G253A	BISFA Test Methods For Synthetic Fibres and Yarns (Set)
203750	AATCC Technical Manual, including All Test Methods (Latest Available Edition)
203748	ASTM Book Of Textile Standards and Test Methods (Volumes 07.01 and 07.02, Latest Available Edition)
G253/004-019	British Standards (Individual) Advise Standard Number, Year and Title ISO Standards (Individual) Advise (As Above) DIN Standards (Individual) Advise (As Above) JIS Standards (Individual) Advise (As Above)
G253/020	IWTO Test Methods For Wool Testing (In Ring Binder) Latest Available Edition



Suitable for the provision of instrument quality compressed air with silent operation. Maximum pressure 8 bars (120psi) tank size 24.5L (6.5 U.S. gallons) maximum displacement 50 litres/minute (1.8 cubic feet/minute). Noise level 45dB(A) at 1 metre. Supplied complete with intake air filter, outlet air/oil filter/regulator and fittings. Larger capacities available, details on application.

WEIGHT	33 kg	74 lb		
DIMENSIONS	Width	Depth	Height	
	450 mm	450 mm	700 mm	
	18 inch	18 inch	28 inch	
ORDERING Info.	G265	Silent Laboratory Compressor		



CONVERSION TABLES

Conversion Factors for Textile Use

TO CONVERT FROM	TO	MULTIPLY BY
Threads in fabric Number per Inch	Number per centimeter	0.3937
Stitches In fabric Number per Inch	Number per centimeter	0.3937
Mass per unit area Ounce per sq.yard	Gram per sq.meter	33.906
Fabric Weight: Gram per sq.meter	Momme	0.23
Twist level: Turns per Inch	Turns per meter	39.37
Diameter: 1/1000 Inch Inch Inch	Micrometer Millimeter Centimeter	25.4 25.4 2.54
Cover factor: a. Woven cotton fabrics $\frac{\text{threads/Inch}}{\sqrt{\text{cotton count}}}$ b. weft knitted worsted fabrics $\frac{1}{\text{stitch length (Inch)}} \times \frac{1}{\sqrt{\text{worsted count}}}$	$\frac{(\text{threads/cm}) \sqrt{\text{tex}}}{10}$ $\frac{\sqrt{\text{tex}}}{\text{stitch length(mm)}}$	0.957 1.172
twist factor (or multiplier) $\frac{\text{turns/Inch}}{\sqrt{\text{cotton count}}}$	$\frac{(\text{turns/cm}) \sqrt{\text{tex}}}{100}$	9.57
Breaking load: Gram-force Pound-force Kilogram-force	Millinewton Newton Decanewton	9.81 4.45 0.98
Tearing strength: Pound-force	Newton	4.45
Tenacity: Gram-force per denier	Millinewton per tex	88.3
Bursting pressure: Pound-force per sq.Inch	Kilonewtons per square meter	6.89

CONVERSION TABLES(Cont'd)

Multiplying Factors for Direct Systems

System	Symbol	Multiplying Factors Yarn Number to Tex Value
Tex	Tt	1
Denier	Td	0.1111
Linen(dry spun),Hemp,Jute	Tj	34.45
Woollen(Aberdeen)	Ta	34.45
Woollen(American grain)		

Constants for Conversion of Indirect Systems

System	Symbol	Constant for Conversion To Tex Value
Asbestos(American)	NaA	4961
Asbestos(English)	NeA	9921
Cotton (Bump Yarn)	Nb	31003
Cotton (English)	NeE	590.5
Glass(U.S.and U.K)	Ng	4961
Linen(Wet or dry spun)	Nec	1654
Metric	Nm	1000
Spun silk	Ns	590.5
Typp	Nt	496.1
Woollen(Alloa)	Nal	1033
Woollen(American cut)	Nac	1654
Woollen(American run)	Nar	310
Woollen(Dewsbury)	Nd	31003
Woollen(Galashlels)	Ng	2480
Woollen(Hawick)	Nh	2687
Woollen(Irish)	Ni	7751
Woollen(West of England)	New	1550
Woollen(Yorkshire)	Ny	1938
Worsred	Ne	885.8

Direct Systems

To convert to tex from a value in another linear density system, multiply by the appropriate factor. To convert from tex to a value in another linear density system, divide by the appropriate factor.

Direct Systems

To convert to tex from a value in indirect system, divide the appropriate constant by the count. To convert from tex to a value in an indirect system, divide the appropriate constant by the value in tex.

CONVERSION TABLES(Cont'd)

Conversion Factors		Clothing Size				Temperature °F/°C	
Length		A=American B=British E=European				Fahrenheit	Celsius
Inches to centimeters	Multiply by 2.54	Ladies	A	B	E	230°	110°
Centimeters to Inches	0.39	Dress/Coat/Suit	8	10	38		
Inches to millimeters	25.4		10	12	40	212	100°
Millimeters to Inches	0.04		12	14	42		
Feet to meters	0.31	Cardigan/Blouse	8	32	38	200	90°
Meters to feet	3.28		10	34	40	190	90°
Yards to meters	0.91		12	14	42	180	80°
Meters to yards	1.09		14	38	44	170	80°
Miles to kilometers	1.61	Stockings	8 1/2	8 1/2	1	160	70°
Kilometers to miles	0.62		9	9	2	150	70°
Area			9 1/2	9 1/2	3	140	60°
Square inches to square centimeters	6.45	Shoes	5	3 1/2	36	130	60°
Square centimeters to square Inches	0.15		5 1/2	4	36	120	50°
Square feet to square meters	0.09		6	4 1/2	37	110	50°
Square meters to square feet	10.76		6 1/2	5	38	100	40°
Square yards to square meters	0.84		7	5 1/2	38 1/2	90	30°
Square meters to square yards	1.20		7 1/2	6	39	80	30°
Square miles to square kilometers	2.59		8	6 1/2	40	70	20°
Square kilometers to square miles	0.39		8 1/2	7	40 1/2	60	20°
Acres to hectares	0.40	Men	9	7 1/2	41	50	10°
Hectares to acres	2.47	Suit	9 1/2	8	42	40	10°
Volume			35	35	44	32	0
Cubic Inches to cubic centimeters	16.39		36	36	46	20	-10
Cubic centimeters to cubic Inches	0.06		37	37	46	10	-18
Cubic feet to cubic meters	0.03		38	38	48	0	-30°
Cubic meters to cubic feet	35.32		39	39	48		
Cubic yards to cubic meters	0.76		40	40	50		
Cubic meters to cubic yards	1.31		41	41	50		
Cubic Inches to liters	0.02	Shirt	42	42	52		
Liters to cubic Inches	61.03		14	14	35-36		
Gallons to liters	4.55		14 1/2	14 1/2	37		
Liters to gallons	0.22		15	15	38		
U.S.gallons to liters	3.79		15 1/2	15 1/2	39		
Liters to U.S.gallons	0.26		16	16	40-41		
Fluid ounces to milliliters	30.77		16 1/2	16 1/2	42		
Milliliters to fluid ounces	0.33		17	17	43		
Weight		Socks	-	10	38-39		
Ounces to grams	28.35		10 1/2	10 1/2	40-41		
Grams to ounces	0.04		11	11	42-43		
Pounds to kilograms	0.45		11 1/2	11 1/2	44-45		
Kilograms to pounds	2.21		12	12	46		
Long tons to tonnes	1.02	Hat	6 7/8	6 3/4	55		
Tonnes to long tons	0.98		7	6 7/8	56		
Short tons to tonnes	0.91		7 1/8	7	57		
Tonnes to short tons	1.10		7 1/4	7 1/8	58		
			7 3/8	7 1/4	59		
			7 1/2	7 3/8	60		

$$^{\circ}\text{F} = \frac{9 \times ^{\circ}\text{C}}{5} + 32$$

$$^{\circ}\text{C} = \frac{5(^{\circ}\text{F} - 32)}{9}$$